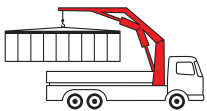


# PSC 4329

*PALFINGER Service Crane*

**PALFINGER CRANE**



## The service crane solution

The PSC 4329 was designed especially for crane body vehicles, allowing for maximum utilization of body compartment space and rear-bumper access to the bed. PALFINGER service cranes offer superior lift-to-weight ratios, while utilizing the full 29ft of hydraulic reach with its' self centering hexagonal booms. North American manufacturing and components including SAE hoses using JIC fittings, standard wireless remote control in conjunction with an industry leading 24-month warranty on all major components guarantee years of worry free usage.

# Combining North American manufacturing, service and support with European technology

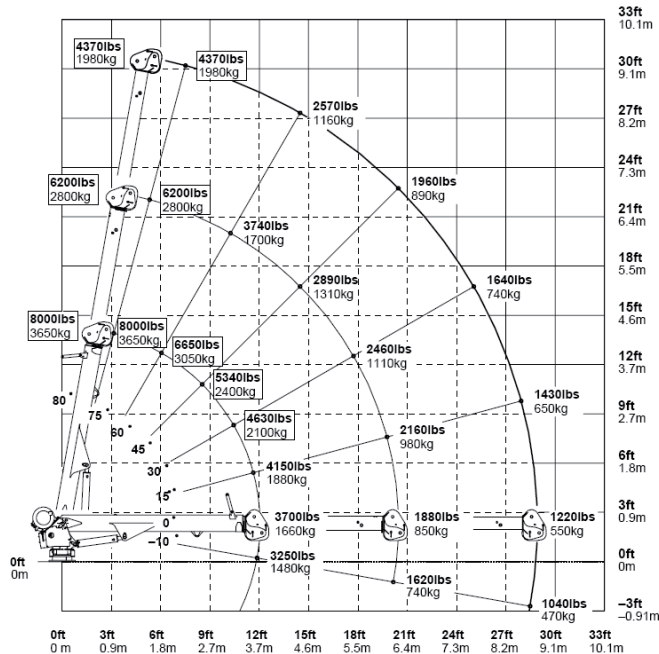
Omaha Standard Palfinger  
 3501 S. 11th St.  
 Council Bluffs, IA 51501  
 Phone: 1-712-328-7444  
 Toll-Free: 1-800-279-2201  
 Fax: 1-800-568-7444  
 www.omahastd.com

PSC 4329  
 07.10

## PSC 4329 Service crane

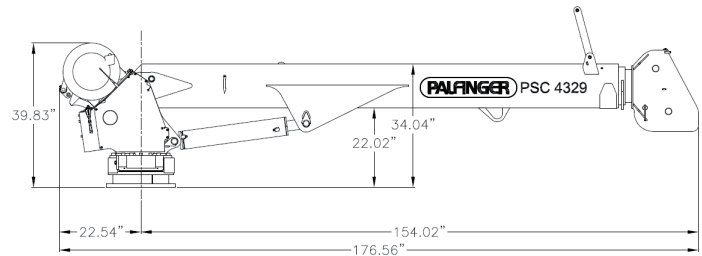
Weights of load-handling devices are part of the load lifted and must be deducted from the capacity

...lbs  
 ...kg Boxes denote two-part line required



## Technical specifications

Max. lifting moment	49,180 ft.lbs
Max. lifting capacity (Double Line)	8,000 lbs
Max. hydraulic outreach	29' 2"
Lifting height from base of crane	28' 6"
Slewing angle	400°
Slewing torque	4,920 ft.lbs
Max. operating pressure	3,045 psi
Crane weight	2,138 lbs



## Hydraulic system

- 3,045 psi system
- 30 gallon reservoir
- 8 GPM crane requirement
- Power requirement of 24hp
- Powered by integrated PTO and pump
- Integrated load-holding valves on all cylinders
- Integrated overload protection system

## Rotation system

- Slewing torque 4,920 ft. lbs
- Slewing speed 2 rpm
- Slewing angle 400°

## Control system

- Central control box
- Portable digital control unit
- Infinitely variable (proportional) speed controls
- True multi-function (8) wireless remote control
- Integrated E-stop button
- Manual valve activation capability

## Winch

- Cable speed 60 ft/min
- Cable speed at 3rd wrap 51 ft/min
- Max winch force single line 4,000 lbs
- Max winch force double line 8,000 lbs
- Cable size 7/16 inch
- Rope length 120 ft
- Orbital hydraulic motor
- Epicyclic gear set
- Integrated two-block damage prevention feature

## Chassis specifications

- Chassis style Conventional cab
- Front axle rating (FAWR) 7,000 lbs
- Rear axle rating (RAWR) 13,660 lbs
- CA 60" to 84"
- GVWR 19,500 lbs