

PK 100002

PALFINGER

LIFETIME EXCELLENCE

**WITH HPSC AND POWER LINK PLUS
OPERATIONS ARE POSSIBLE EVEN IN
RESTRICTED SPACES**



LIFETIME EXCELLENCE

PALFINGER LOADER CRANES ARE OUTSTANDING WITH THEIR SUPERIOR LIFE-CYCLE PERFORMANCE. THEY ARE THE MOST ECONOMICAL AND ALSO THE MOST RELIABLE OVER THE ENTIRE PRODUCT LIFE. FROM SOLUTION FINDING TO RESALE.

BETTER
SOLUTIONS

BETTER
EFFICIENCY

BETTER
ERGONOMICS

HIGHER VALUE
RETENTION



HIGHER
AVAILABILITY

HIGHER
SERVICEABILITY

BETTER
ECOLOGY

MORE
RELIABILITY



ENORMOUS OUTREACH AND PRECISION





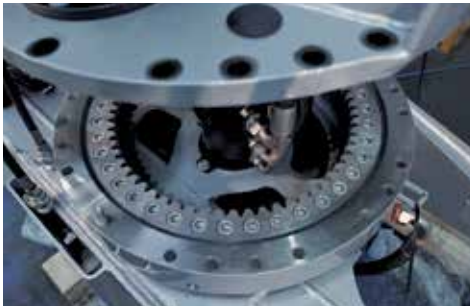
- More lifting power due to E-HPLS
- Additional applications due to Power Link Plus
- More efficient and faster due to continuous slewing system
- Shorter loadcycles due to high speed extension
- Maximum reliability due to PAL 50



FIRST-RATE IN DESIGN AND PERFORMANCE

12

HIGHLIGHTS



CONTINUOUS SLEWING SYSTEM
UNRESTRICTED MOVEMENT

More efficient in operation due to faster loading cycles, since the crane can be slewed over a shorter distance. The crane works more efficiently and faster.



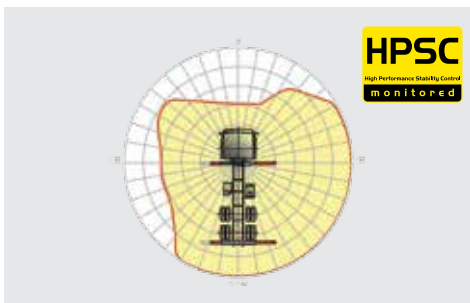
POWER LINK PLUS
HIGH VARIETY OF USES

With the 10-degree reverse linkage system, you can reach through low door openings and also work inside buildings. Heavy crane work – even in difficult conditions.



HIGH SPEED EXTENSION
FOR EFFICIENT ASSIGNMENTS

The High Speed Extension speeds up the extension boom system. Crane works faster and more efficiently.



HPSC
MAXIMUM UTILISATION OF THE WORKING RANGE

The variable stabiliser positioning of the High Performance Stability Control System makes it possible to utilise the lifting capacity to the maximum. It enables working within tight spaces.



PAL 50
COMFORT AND SAFETY

The PALTRONIC 50, PALFINGER offers the latest control electronics for the series production crane. The custom designed electronic operates and monitors the crane and offers more efficiency in use and safety.



E-HPLS
INCREASED LIFTING CAPACITY

The manually activated E-HPLS increases the capacity of the crane up to 10% while the operating speed is reduced. The crane operates more efficiently.



ROPE WINCH
ADDITIONAL APPLICATIONS

Greatest possible attention was paid to the operator-friendliness and efficiency in use thanks to the high lifting capacity, speed and optimum winding performance.



INTERGAL BASE FRAME
PERFECT INTEGRATION

A Torsion resistant construction is possible due to an integral base frame. The low overall installation height and the weight savings allow for more efficiency in use.



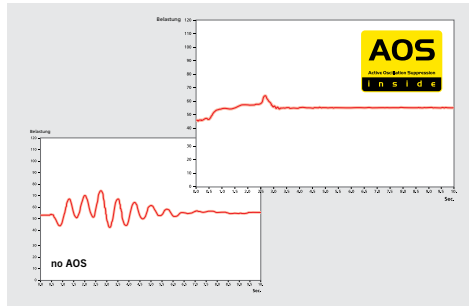
RADIO REMOTE CONTROL
DIALOGUE WITH THE OPERATOR

PALFINGER radio remote controls are equipped with linear lever or cross lever and provide the greatest possible comfort for the operator. All EH models with LED-Display inform the crane operator about the different operating conditions.



HOSE EQUIPMENT FOR ATTACHMENTS
VERSATILE AND USER-FRIENDLY

The hose equipment offers an easy means of connecting auxiliary equipment. The hose equipment is guided in hose trays for protection.



AOS
MAXIMUM PRECISION AND SAFETY

The active oscillation suppression system prevents "post-oscillation" in the event of rapid braking or load changes. The stress peaks on the extension boom system are reduced and material fatigue and wear are minimised. This increases the resale value.



FLY-JIB
ADDITIONAL WORKING RANGE

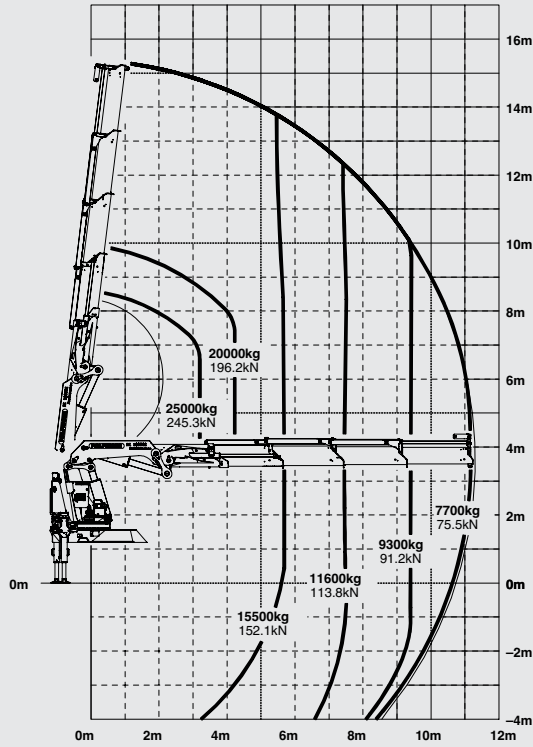
A fly-jib system extends the working range of the crane and increases the possible areas of application. More efficiency in use thanks to the improvement of the movement geometry of the crane.



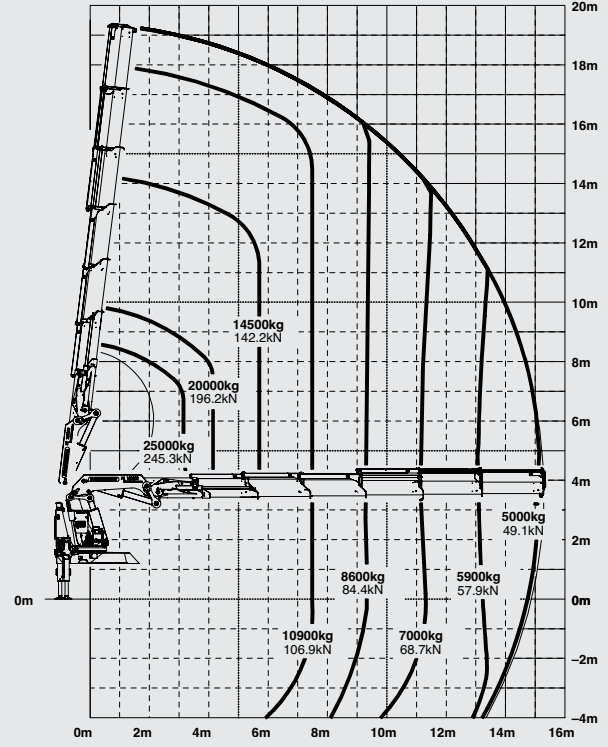
* Optional features / country-specific equipment

PK 100002 PERFORMANCE

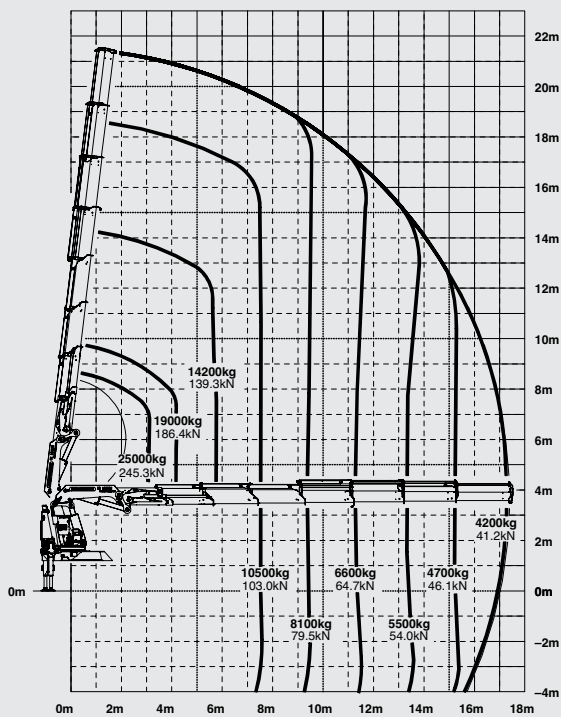
C



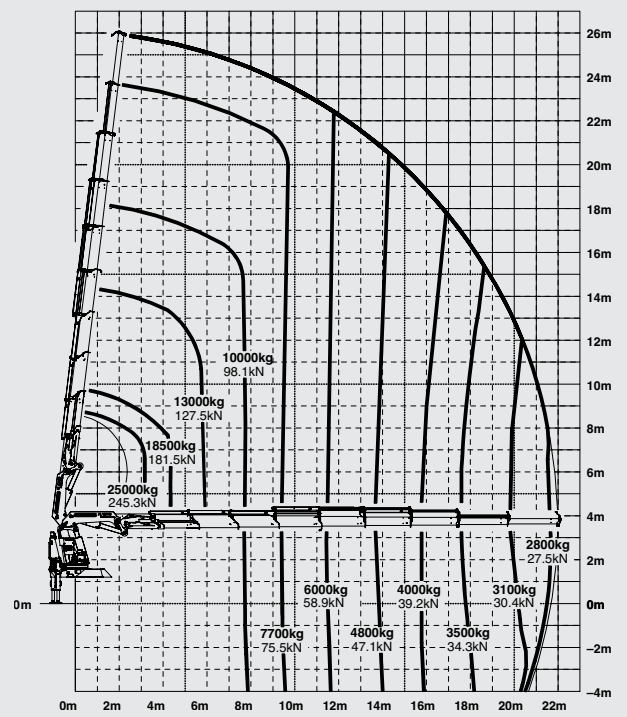
E



F

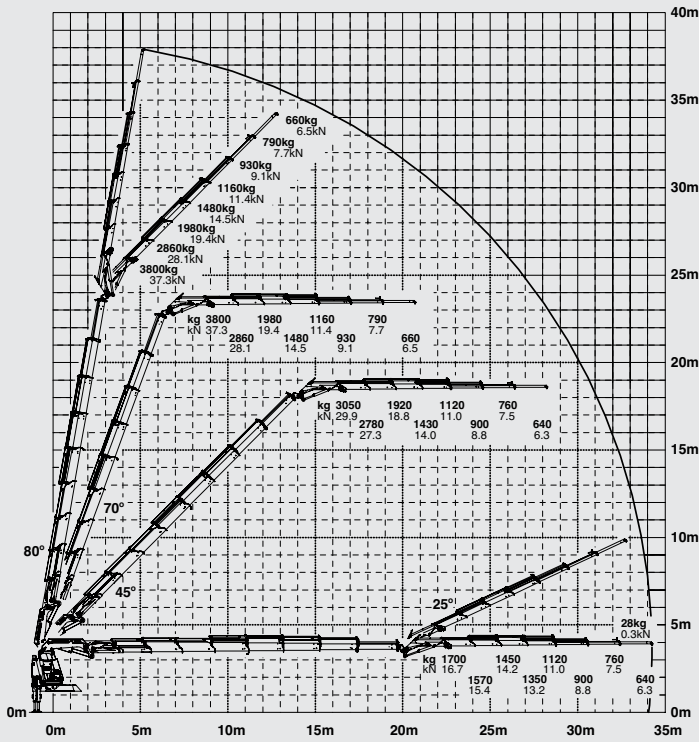


H

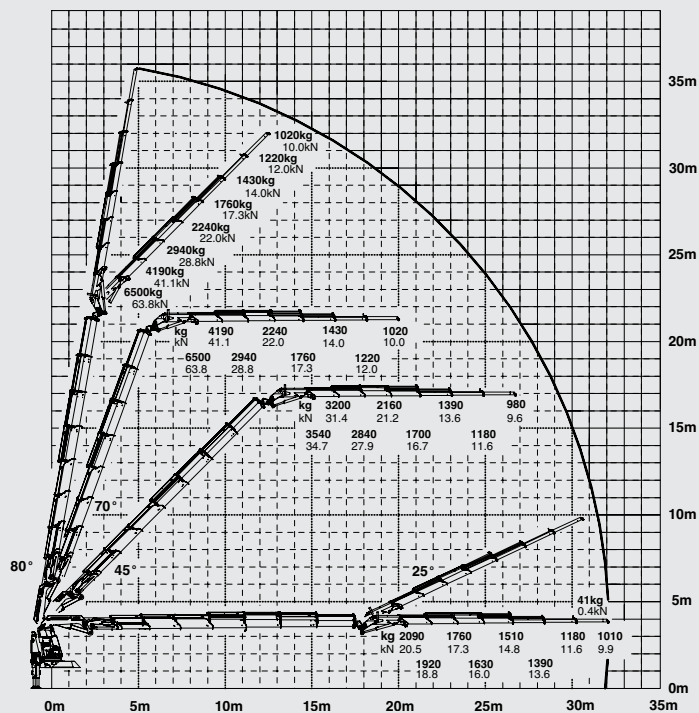


RELIABLE IN EVERY SITUATION

G PJ125E JV1



F PJ170 JV1



LIFTING CAPACITIES

B	max.	30000 kg	66140 lbs
	4.4 m	14' 5"	19900 kg / 43870 lbs
	5.6 m	18' 4"	15700 kg / 34610 lbs
	7.4 m	24' 3"	12000 kg / 26450 lbs
	9.2 m	30' 2"	9700 kg / 21380 lbs

C	max.	30000 kg	66140 lbs
	4.4 m	14' 5"	19640 kg / 43300 lbs
	5.6 m	18' 4"	15400 kg / 33950 lbs
	7.4 m	24' 3"	11640 kg / 25660 lbs
	9.2 m	30' 2"	9320 kg / 20550 lbs
	11.1 m	36' 5"	7720 kg / 17020 lbs

D	max.	30000 kg	66140 lbs
	4.4 m	14' 5"	19300 kg / 42550 lbs
	5.6 m	18' 4"	15100 kg / 33290 lbs
	7.4 m	24' 3"	11300 kg / 24910 lbs
	9.2 m	30' 2"	8960 kg / 19750 lbs
	11.1 m	36' 5"	7370 kg / 16250 lbs
	13.1 m	43' 0"	6230 kg / 13730 lbs

E	max.	30000 kg	66140 lbs
	4.4 m	14' 5"	19000 kg / 41890 lbs
	5.6 m	18' 4"	14800 kg / 32630 lbs
	7.4 m	24' 3"	10960 kg / 24160 lbs
	9.2 m	30' 2"	8630 kg / 19030 lbs
	11.1 m	36' 5"	7020 kg / 15480 lbs
	13.1 m	43' 0"	5870 kg / 12940 lbs
	15.2 m	49' 10"	5050 kg / 11130 lbs

F	max.	30000 kg	66140 lbs
	4.4 m	14' 5"	18800 kg / 41450 lbs
	5.6 m	18' 4"	14530 kg / 32030 lbs
	7.4 m	24' 3"	10670 kg / 23520 lbs
	9.2 m	30' 2"	8300 kg / 18300 lbs
	11.1 m	36' 5"	6700 kg / 14770 lbs
	13.1 m	43' 0"	5540 kg / 12210 lbs
	15.2 m	49' 10"	4700 kg / 10360 lbs
	17.3 m	56' 9"	4120 kg / 9080 lbs
	19.5 m*	64' 0"	3500 kg / 7720 lbs
	21.8 m*	71' 6"	3000 kg / 6610 lbs

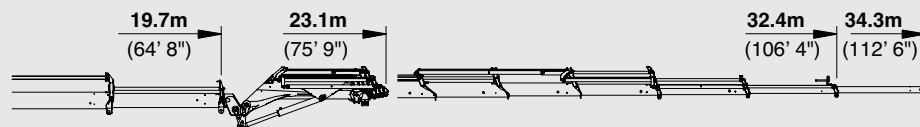
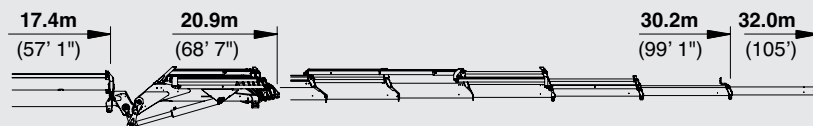
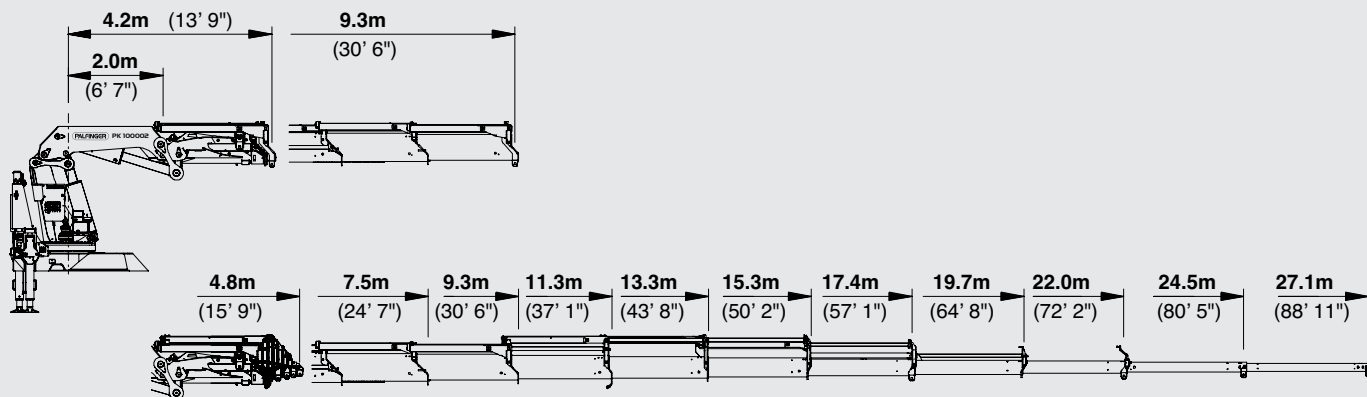
G	max.	30000 kg	66140 lbs
	4.4 m	14' 5"	18620 kg / 41050 lbs
	5.6 m	18' 4"	14330 kg / 31590 lbs
	7.4 m	24' 3"	10430 kg / 22990 lbs
	9.2 m	30' 2"	7960 kg / 17550 lbs
	11.1 m	36' 5"	6360 kg / 14020 lbs
	13.1 m	42' 12"	5220 kg / 11510 lbs
	15.2 m	49' 10"	4420 kg / 9740 lbs
	17.3 m	56' 9"	3820 kg / 8420 lbs
	19.6 m	64' 4"	3350 kg / 7390 lbs
	21.7 m*	64' 0"	2880 kg / 6350 lbs
	24.8 m*	81' 4"	2480 kg / 5470 lbs

H	max.	29200 kg	64370
	4.4 m	14' 5"	18500 kg / 40780 lbs
	5.6 m	18' 4"	14150 kg / 31190 lbs
	7.4 m	24' 3"	10200 kg / 22490 lbs
	9.2 m	30' 2"	7850 kg / 17310 lbs
	11.1 m	36' 5"	6200 kg / 13670 lbs
	13.1 m	42' 12"	5030 kg / 11090 lbs
	15.2 m	49' 10"	4200 kg / 9260 lbs
	17.3 m	56' 9"	3580 kg / 7890 lbs
	19.6 m	64' 4"	3100 kg / 6830 lbs
	21.9 m	71' 10"	2770 kg / 6110 lbs
	24.3 m*	79' 9"	2400 kg / 5290 lbs
	26.9 m*	88' 3"	1650 kg / 3640 lbs

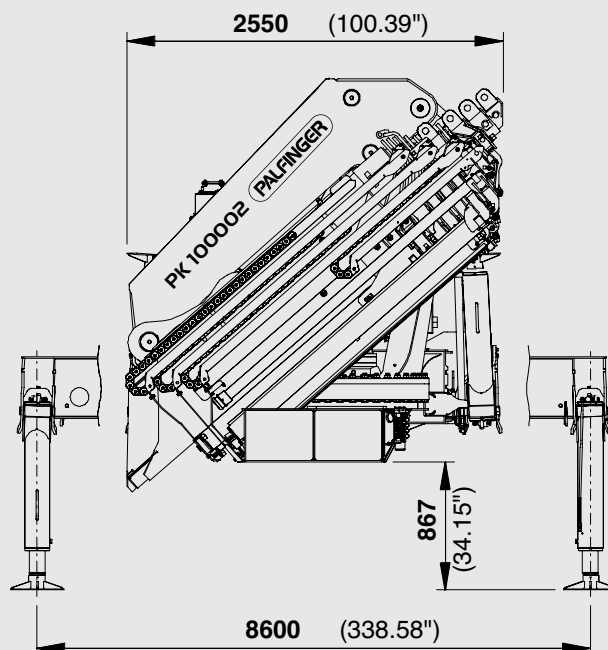
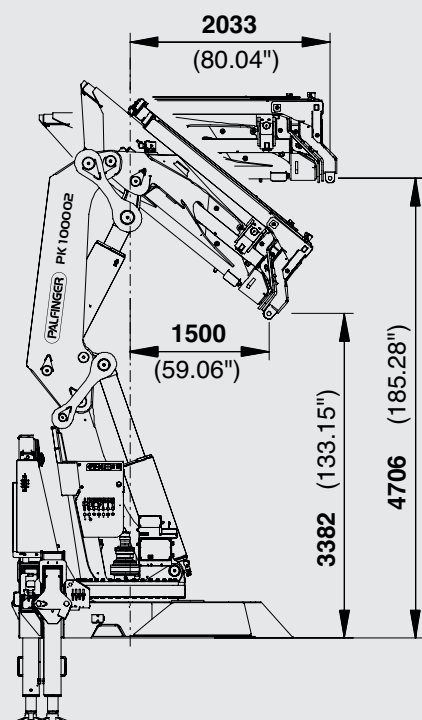
*mechanical extension

PERFECT DIMENSIONS

EXTENSION BOOM VARIATIONS



DIMENSIONS



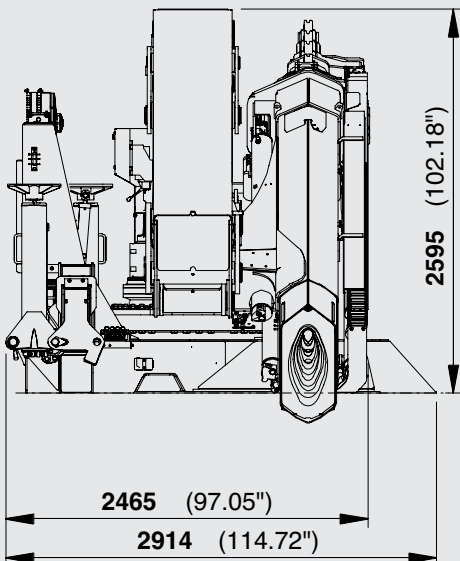
PK 100002

F PJ170E JV1

G PJ125E JV1

TECHNICAL SPECIFICATIONS (EN 12999 HC1 HD4/B3)

Max. lifting moment	92.2 mt/904.5 kNm	666870 ft.lbs
Max. lifting capacity	30000 kg/294.3 kN	66140 lbs
Max. hydraulic outreach	22.0 m	72' 2"
Max. manual outreach	27.1 m	88' 11"
Max. outreach (with fly-jib)	32.0 m	104' 12"
Slewing angle	continuously variable	
Slewing torque	9.0 mt/88.3 kNm	65100 ft.lbs
Stabiliser spread (std.)	8.6 m	28' 3"
Fitting space required (std.)	2.31 m / 2.47 m	7' 7" / 8' 1"
Width folded	2.55 m	8' 4"
Max. operating pressure	365 bar	5293 psi
Recommended pump capacity	from 90 l/min	23.8 US gal./min
	to 110 l/min	29.1 US gal./min
Dead weight (std.)	8800 kg	19400 lbs





Cranes shown in the leaflet are partially optional equipped and do not always correspond to the standard version. Country-specific regulations must be observed. Dimensions may vary. Subject to technical changes, errors and translation mistakes.