

# PK 63002 EH

**PALFINGER**

LIFETIME EXCELLENCE

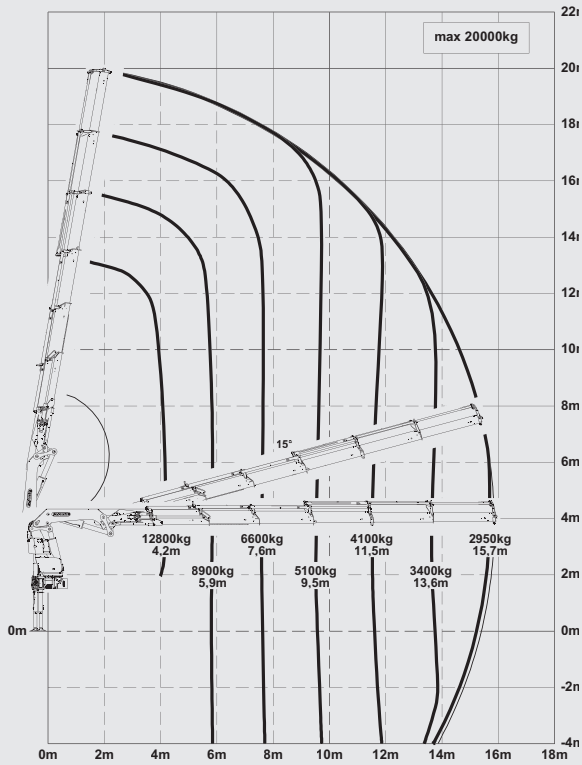
**THE CONTINUOUS SLEWING SYSTEM  
INCREASES THE EFFICIENCY IN USE  
DURING THE CRANE'S ENTIRE LIFETIME.**



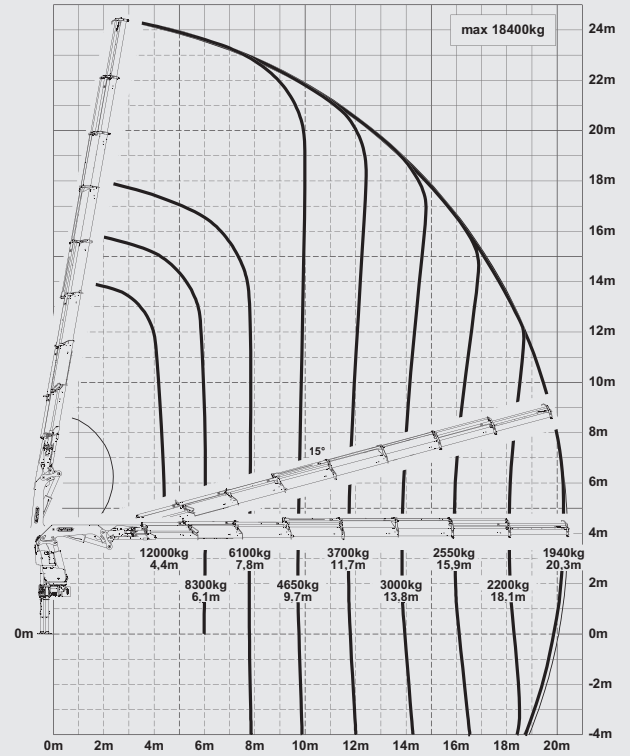
# PK 63002 EH

## HIGH PERFORMANCE

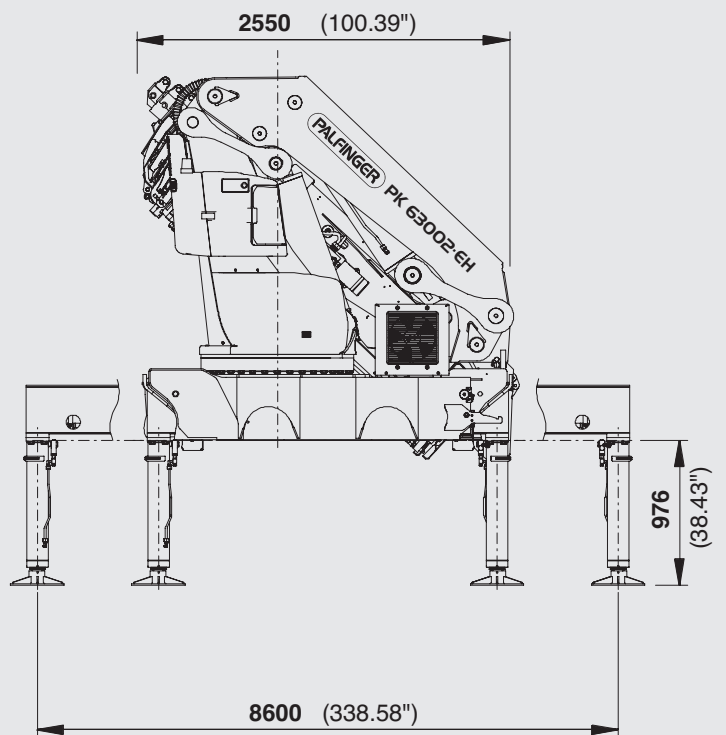
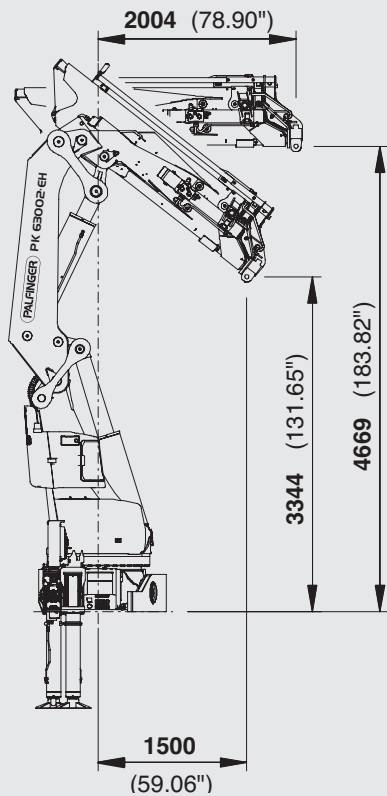
E



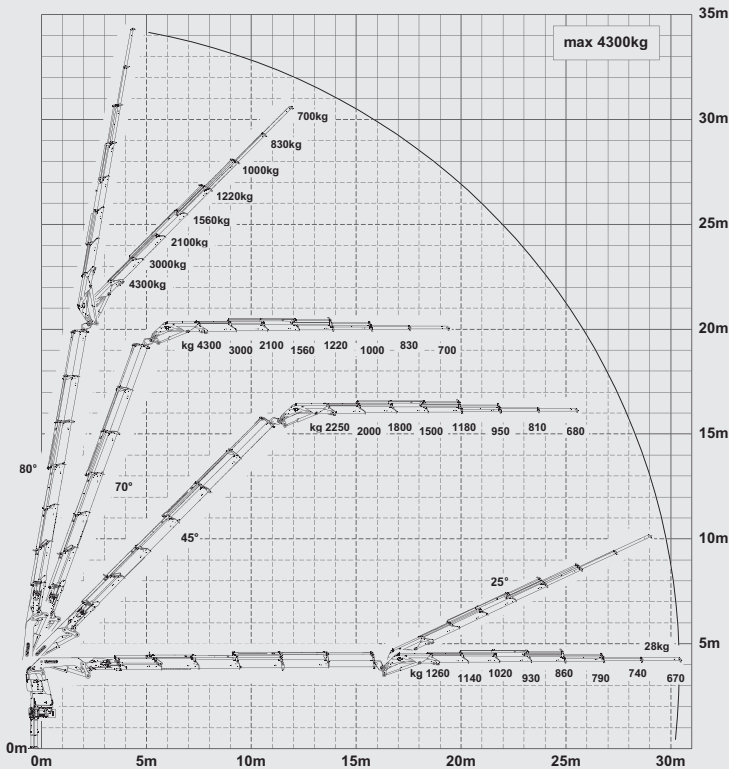
G



## DIMENSIONS



## E PJ125E JV1

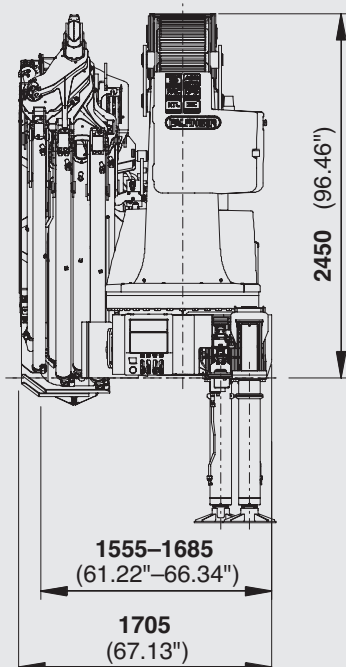


- More efficient and faster due to continuous slewing system
- More lifting power due to E-HPLS
- Practical and attractive due to Functional Design
- High value retention due to KTL coating



## TECHNICAL SPECIFICATIONS (EN 12999 HC1 HD4/B3)

Max. lifting moment	59.4 mt / 582.7 kNm	429740 ft.lbs
Max. lifting capacity	22000 kg / 215.8 kN	48500 lbs
Max. hydraulic outreach	20.4 m	66' 11"
Max. manual outreach	25.1 m	82' 4"
Max. outreach (with fly jib)	30,4 m	99' 9"
Slewing angle	endless	
Slewing torque with 1 gear	4.5 mt / 44.1 kNm	32560 ft.lbs
Slewing torque with 2 gears	7.0 mt / 68.7 kNm	50640 ft.lbs
Stabilizer spread (std)	8.6 m	28' 3"
Fitting space required	std. 1.56 m/5' 1"	max. 1.71 m/5' 7"
Width folded	2.55 m	8' 4"
Max. operating pressure	350 bar	5075 psi
Recommended pump capacity	from 80 l/min	21.1 Us gal. /min
	to 100 l/min	26.4 US gal. /min.
Dead weight (std.)	5040 kg	11110 lbs



\* Optional features / country-specific equipment

**PALFINGER LOADER CRANES ARE CONVINCING DUE TO THEIR SUPERIOR LIFE-CYCLE PERFORMANCE. THEY ARE THE MOST ECONOMICAL AND ALSO THE MOST RELIABLE OVER THE ENTIRE PRODUCT LIFE. FROM SOLUTION FINDING TO RESALE.**

➤ **BETTER SOLUTIONS**

➤ **HIGHER VALUE RETENTION**

➤ **BETTER EFFICIENCY**

➤ **BETTER ECOLOGY**



➤ **BETTER ERGONOMICS**

**LIFETIME EXCELLENCE**

➤ **HIGHER SERVICEABILITY**

➤ **HIGHER AVAILABILITY**

➤ **MORE RELIABILITY**

For further information please visit: [www.palfinger.com/thebrand](http://www.palfinger.com/thebrand)