

**PK 78002 SH**

**PALFINGER**

LIFETIME EXCELLENCE

**THE DUAL POWER SYSTEM FOR HIGH  
OUTREACH AS WELL AS FOR HEAVY  
DUTY OPERATION**



# LIFETIME EXCELLENCE

**PALFINGER LOADER CRANES ARE CONVINCING DUE TO THEIR SUPERIOR LIFE-CYCLE PERFORMANCE. THEY ARE THE MOST ECONOMICAL AND ALSO THE MOST RELIABLE OVER THE ENTIRE PRODUCT LIFE. FROM SOLUTION FINDING TO RESALE.**

BETTER  
SOLUTIONS

BETTER  
EFFICIENCY

BETTER  
ERGONOMICS

HIGHER VALUE  
RETENTION



HIGHER  
AVAILABILITY

HIGHER  
SERVICEABILITY

BETTER  
ECOLOGY

MORE  
RELIABILITY





# UNBEATABLE POWER-TO-WEIGHT-RATIO







- Maximum reliability due to PAL 150
- More efficiency with fly jib due to DPS Plus
- Increased operating times due to low-maintenance extension system
- Practical and attractive due to Functional Design
- Continuous slewing for increased efficiency and speed



# PERFECT TOOL WITH SOPHISTICATED KINEMATICS

# 12

## HIGHLIGHTS



**CONTINUOUS SLEWING SYSTEM**  
UNRESTRICTED MOVEMENT

More efficient in operation due to faster loading cycles, since the crane can be slewed over a shorter distance. The crane works more efficiently and faster.



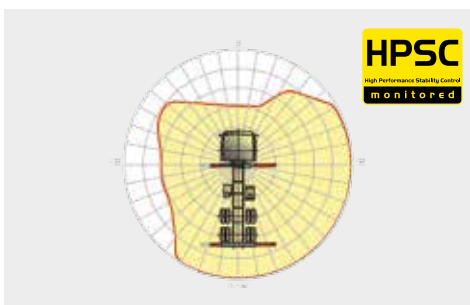
**POWER LINK PLUS**  
HIGH VARIETY OF USES

With the 15-degree reverse linkage system, you can reach through low door openings and also work inside buildings. Heavy crane work – even in difficult conditions.



**LOW-MAINTENANCE EXTENSION SYSTEM**  
REDUCES SERVICE TIME

With sliding elements made of synthetic material and the high-quality KTL coating, this boom system significantly simplifies service performed by the operator. This saves time and money – and protects the environment.



**HPSC**  
MAXIMUM UTILISATION OF THE WORKING RANGE

The variable stabiliser positioning of the High Performance Stability Control System makes it possible to utilise the lifting capacity to the maximum. It enables working within tight spaces.



**S-HPLS**  
MORE LIFTING POWER WHEN IT IS REALLY NEEDED

S-HPLS is one of the most important functions of the PALTRONIC 150. It is a fully automatic system for increasing the lifting power. Depending on the need, there is continuous adaptation of the lifting power and speed of the crane.



**CONTROL TECHNOLOGY**  
COMMUNICATION WITH THE OPERATOR

New standards in operator friendliness through perfect interaction between PALTRONIC 150, control valve and radio remote control. The operator is guided clearly and safely.



**POWER LINK CABLE WINCH**  
MORE COMFORT IN CABLE WINCH OPERATION

Characterised by low installation height, it is ideal for working inside buildings and transports with the crane boom unfolded. The Comfort Cable Routing reduces set-up times to a minimum.



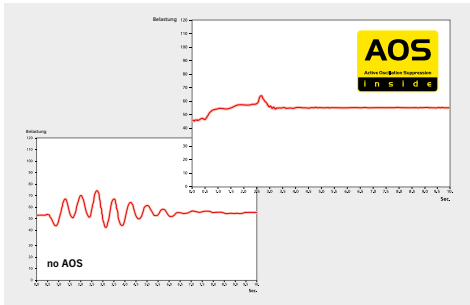
**FUNCTIONAL DESIGN**  
PRACTICAL AND ATTRACTIVE

Robust plastic covers protect crane parts against dirt and damage. Better appearance and increased operational comfort – during the entire lifetime.



**KTL – CATHODIC DIP PAINTING**  
FOR RETAINING HIGH VALUE

The UV-resistant coating guarantees long-term surface protection. Perfect appearance during the entire lifetime for maximum resale value.



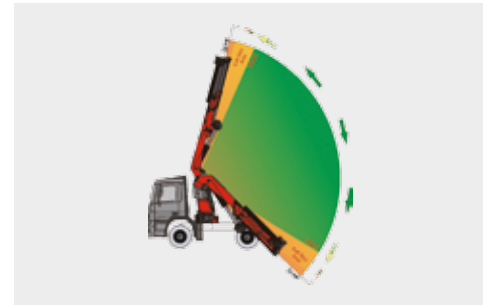
**AOS**  
MAXIMUM PRECISION AND SAFETY

The active oscillation suppression system prevents "post-oscillation" in the event of rapid braking or load changes. The stress peaks on the extension boom system are reduced and material fatigue and wear are minimised. This increases the resale value.



**DPS PLUS**  
MORE EFFICIENT FLY-JIB OPERATION

The Dual Power System allows multiple uses of the crane both for large outreaches as well as for heavy load operation.



**SOFT STOP FUNCTION**  
MORE COMFORT AND SAFETY

The Soft Stop function is an electronic limit position damper. It causes gentle braking of all crane movements before the limit position is reached. Hence, jerky movements and load impacts can be avoided. The crane can be operated more gently and precisely.

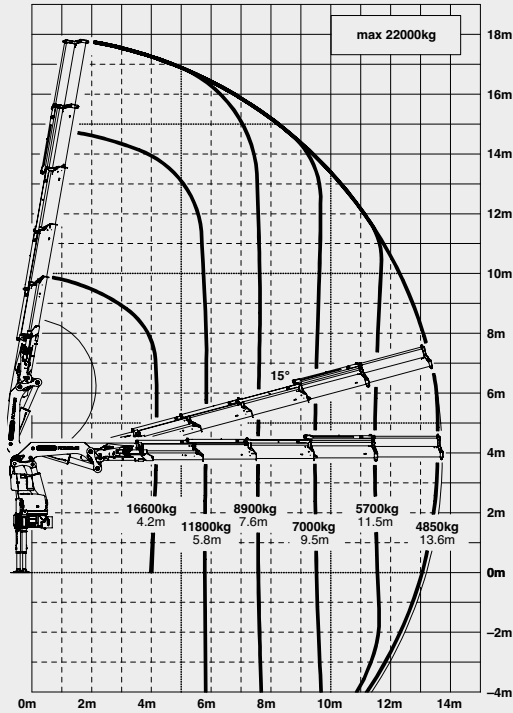


\* Optional features / country-specific equipment

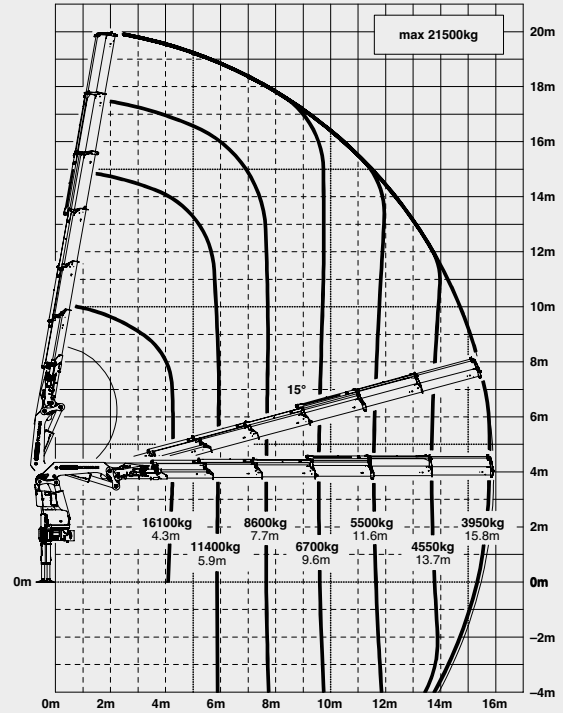


# PK 78002 SH HIGH PERFORMANCE

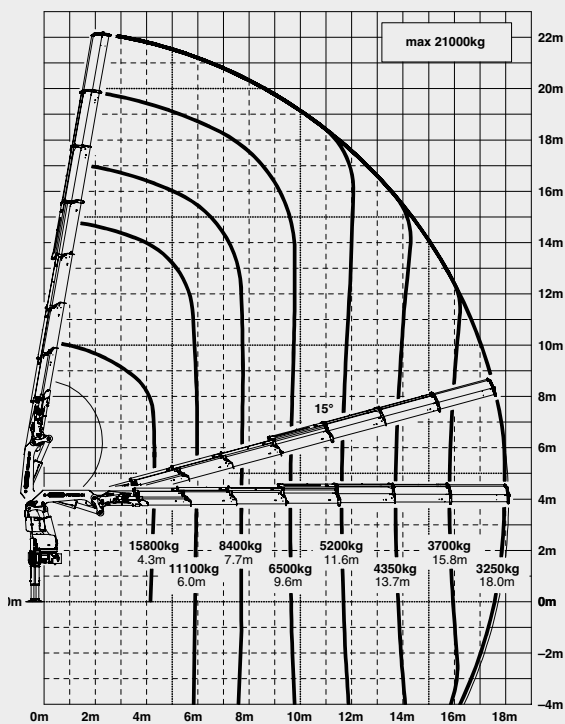
D



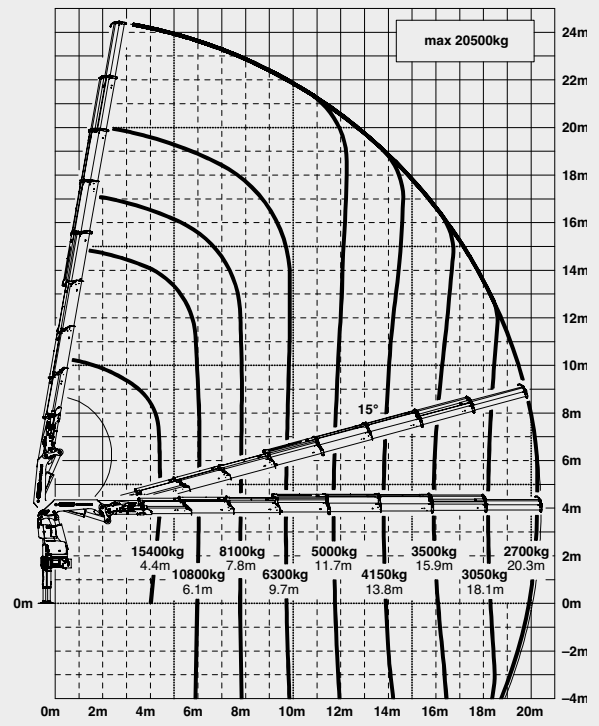
E



F



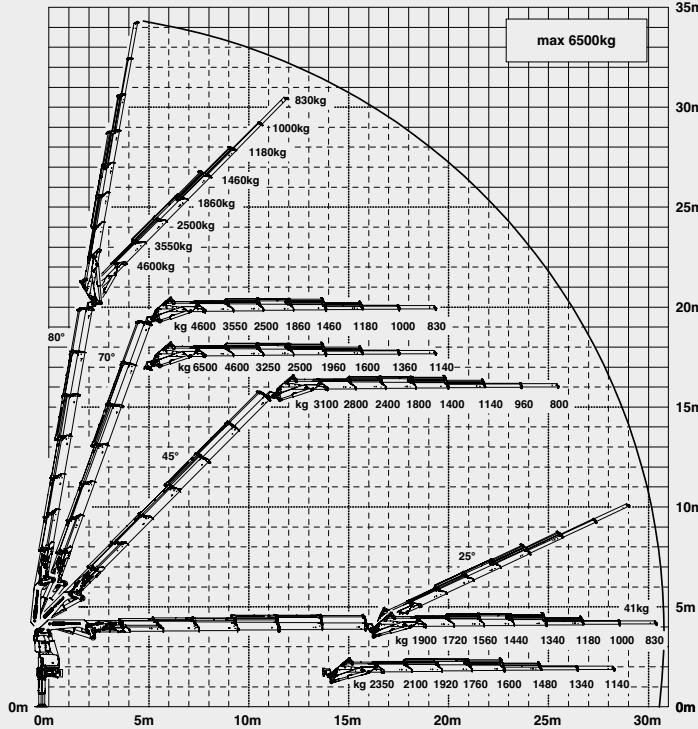
G





# MORE LIFTING POWER WHEN IT IS REALLY NEEDED

## E PJ170E JV1 DPS PLUS



## LIFTING CAPACITIES

A	max.	23000 kg	50700 lbs
	4.0 m	13' 1"	17900 kg / 39500 lbs
	5.7 m	18' 8"	12900 kg / 28400 lbs
	7.4 m	24' 3"	10000 kg / 21900 lbs

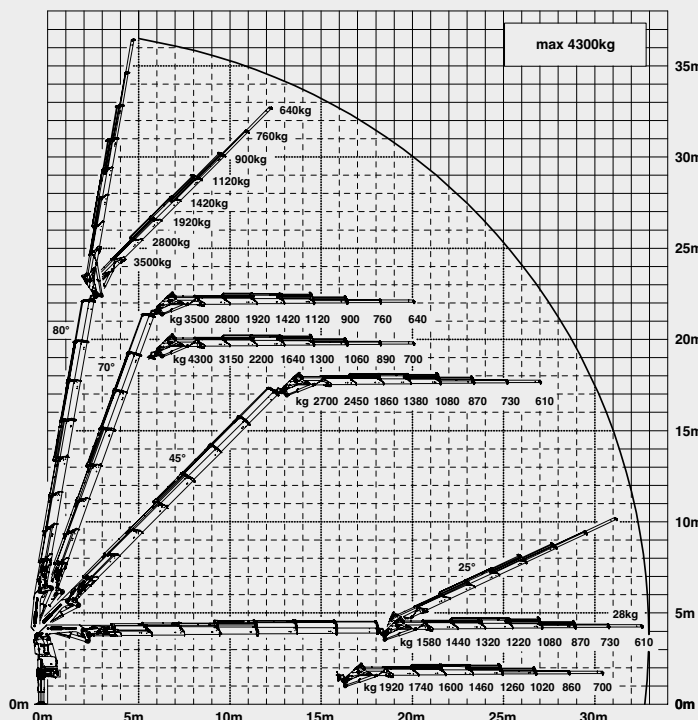
B	max.	23000 kg	50700 lbs
	4.1 m	13' 5"	17600 kg / 38700 lbs
	5.7 m	18' 8"	12600 kg / 27700 lbs
	7.5 m	24' 7"	9600 kg / 21200 lbs
	9.4 m	30' 10"	7700 kg / 17000 lbs

C	max.	23000 kg	50700 lbs
	4.1 m	13' 5"	17300 kg / 38100 lbs
	5.7 m	18' 8"	12300 kg / 27100 lbs
	7.5 m	24' 7"	9400 kg / 20600 lbs
	9.4 m	30' 10"	7400 kg / 16300 lbs
	11.4 m	37' 5"	6100 kg / 13500 lbs

D	max.	22000 kg	48500 lbs
	4.2 m	13' 9"	16600 kg / 36600 lbs
	5.8 m	19' 0"	11800 kg / 26000 lbs
	7.6 m	24' 11"	8900 kg / 19600 lbs
	9.5 m	31' 2"	7000 kg / 15500 lbs
	11.5 m	37' 9"	5700 kg / 12600 lbs
	13.6 m	44' 7"	4850 kg / 10600 lbs

E	max.	21500 kg	47400 lbs
	4.2 m	14' 1"	16100 kg / 35500 lbs
	5.9 m	19' 4"	11400 kg / 25100 lbs
	7.6 m	25' 3"	8600 kg / 18900 lbs
	9.5 m	31' 6"	6700 kg / 14800 lbs
	11.5 m	38' 1"	5500 kg / 12000 lbs
	13.6 m	44' 11"	4550 kg / 10000 lbs
	15.7 m	51' 10"	3950 kg / 8700 lbs

## F PJ125E JV1 DPS PLUS



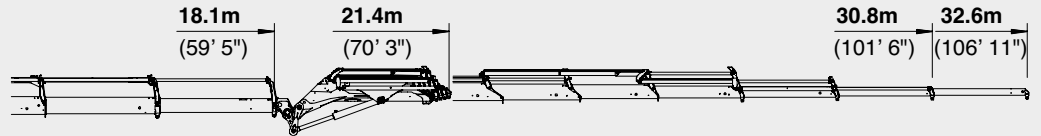
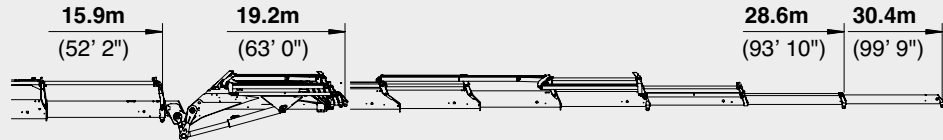
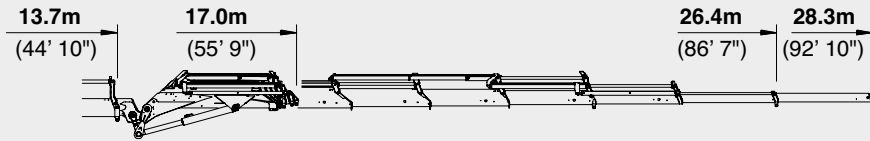
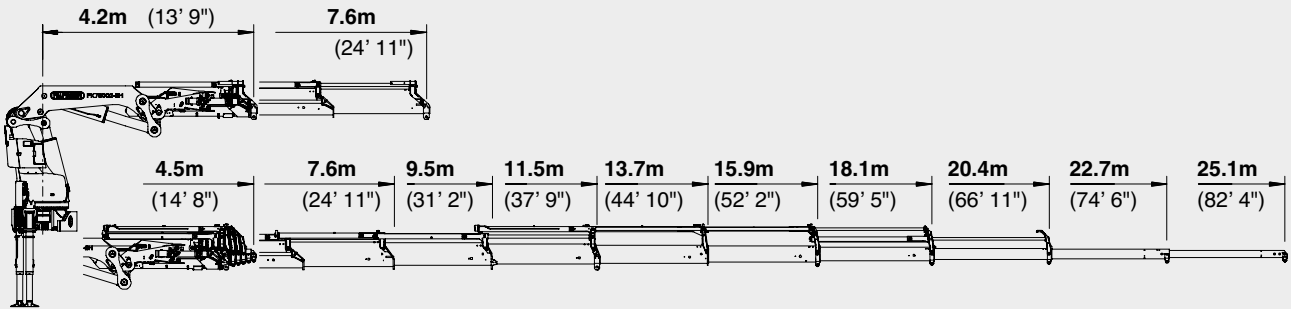
F	max.	21000 kg	46300 lbs
	4.3 m	14' 1"	15800 kg / 34800 lbs
	6.0 m	19' 8"	11100 kg / 24600 lbs
	7.7 m	25' 3"	8400 kg / 18400 lbs
	9.6 m	31' 6"	6500 kg / 14300 lbs
	11.6 m	38' 1"	5200 kg / 11500 lbs
	13.7 m	44' 11"	4350 kg / 9600 lbs
	15.8 m	51' 10"	3700 kg / 8200 lbs
	18.0 m	59' 1"	3250 kg / 7200 lbs

G	max.	20500 kg	45200 lbs
	4.4 m	14' 5"	15400 kg / 33800 lbs
	6.1 m	20' 0"	10800 kg / 23900 lbs
	7.8 m	25' 7"	8100 kg / 17800 lbs
	9.7 m	31' 10"	6300 kg / 13800 lbs
	11.7 m	38' 5"	5000 kg / 11000 lbs
	13.8 m	45' 3"	4150 kg / 9100 lbs
	15.9 m	52' 2"	3500 kg / 7700 lbs
	18.1 m	59' 5"	3050 kg / 6700 lbs
	20.3 m	66' 7"	2700 kg / 6000 lbs
	22.6 m*	74' 2"	1900 kg / 4200 lbs
	24.9 m*	81' 8"	1200 kg / 2650 lbs

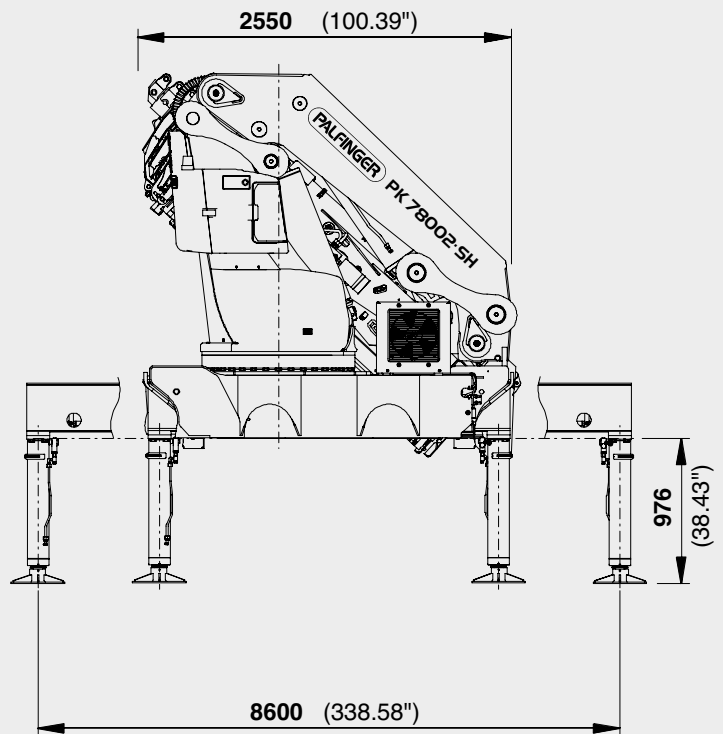
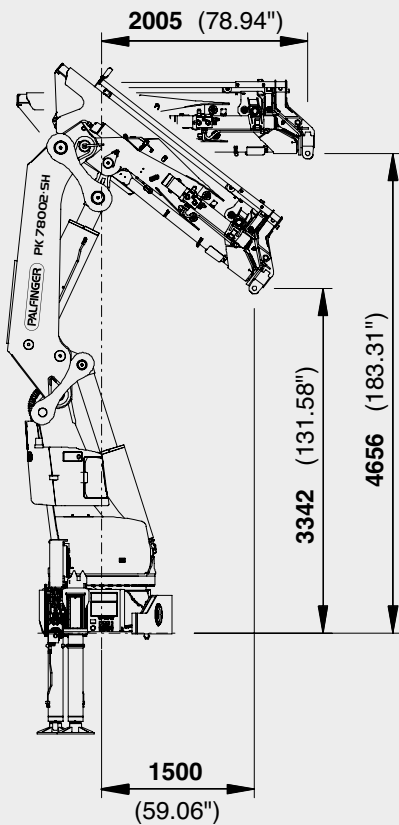
\*mechanical extension

# PERFECT DIMENSIONS

## EXTENSION BOOM VARIATIONS



## DIMENSIONS



## PK 78002 SH

## D PJ170E JV1

## E PJ170E JV1 DPS PLUS

## F PJ125E JV1 DPS PLUS

### TECHNICAL SPECIFICATIONS (EN 12999 HC1 HD5/B3)

Max. lifting moment	74.7 mt / 732.6 kNm	540290 ft.lbs
Max. lifting capacity	25000 kg / 245.3 kN	55120 lbs
Max. hydraulic outreach	20.4 m	66' 11"
Max. manual outreach	25.1 m	82' 4"
Max. outreach (with fly-jib)	32.6 m	106' 11"
Slewing angle	continuously variable	
Slewing torque with 1 gear	4.5 mt / 44.1 kNm	32560 ft.lbs
Slewing torque with 2 gears	7.0 mt / 68.7 kNm	50640 ft.lbs
Stabiliser spread	8.6 m	28' 3"
Fitting space required (std.)	min. 1.56 m / 5' 1"	max. 1.71 m / 5' 7"
Width folded	2.55 m	8' 4"
Max. operating pressure	365 bar	5293 psi
Recommended pump capacity	from 100 l/min	26.4 US gal./min
	to 120 l/min	31.7 US gal./min
Dead weight (std.)	5908 kg	13020 lbs

