

PK 8502 / 9002 EH

PALFINGER

LIFETIME EXCELLENCE

POWER LINK PLUS ENABLES YOU TO WORK
IN TIGHT SPACES – EVEN INSIDE BUILDINGS



LIFETIME EXCELLENCE

PALFINGER LOADER CRANES ARE OUTSTANDING WITH THEIR SUPERIOR LIFE-CYCLE PERFORMANCE. THEY ARE THE MOST ECONOMICAL AND ALSO THE MOST RELIABLE OVER THE ENTIRE PRODUCT LIFE. FROM SOLUTION FINDING TO RESALE.

BETTER
SOLUTIONS

BETTER
EFFICIENCY

BETTER
ERGONOMICS

HIGHER VALUE
RETENTION



HIGHER
AVAILABILITY

HIGHER
SERVICEABILITY

BETTER
ECOLOGY

MORE
RELIABILITY



FOR UNIVERSAL USE





- High value retention due to KTL coating
- More lifting power due to E-HPLS
- High operator friendliness due to optional radio remote control
- Increased operating times due to maintenance-free extension system
- Maximum utilisation of the working range due to HPSC



FIRST-RATE IN DESIGN AND PERFORMANCE

12 HIGHLIGHTS



POWER LINK PLUS
HIGH VARIETY OF USES

With the 15-degree reverse linkage system, you can reach through low door openings and also work inside buildings. Heavy crane work – even in difficult conditions.



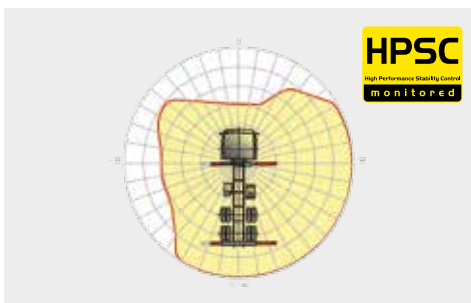
LOW-MAINTENANCE EXTENSION SYSTEM
REDUCES SERVICE TIME

With sliding elements made of synthetic material and the high-quality KTL coating, this boom system significantly simplifies service performed by the operator. This saves time and money – and protects the environment.



HIGH SPEED EXTENSION
FOR EFFICIENT ASSIGNMENTS

The High Speed Extension speeds up the extension boom system. Crane works faster and more efficiently.



HPSC
MAXIMUM UTILISATION OF THE WORKING RANGE

The variable stabiliser positioning of the High Performance Stability Control System makes it possible to utilise the lifting capacity to the maximum. It enables working within tight spaces.



PAL 50
COMFORT AND SAFETY

The PALTRONIC 50, PALFINGER offers the latest control electronics for the series production crane. The custom designed electronic operates and monitors the crane and offers more efficiency in use and safety.



CONTROL CONSOLE
ALL INFORMATION AT A GLANCE

All important information about the crane can be seen on the main control stand. A digital indicator counts and displays the operating hours. Ergonomic control levers and the optional lighting package provide increased safety and comfort even in poor visibility conditions.



KTL – CATHODIC DIP PAINTING
FOR RETAINING HIGH VALUE

The UV-resistant coating guarantees long-term surface protection. Perfect appearance during the entire lifetime for maximum resale value.



FUNCTIONAL DESIGN
PRACTICAL AND ATTRACTIVE

Robust plastic covers protect crane parts against dirt and damage. Better appearance and increased operational comfort – during the entire lifetime.



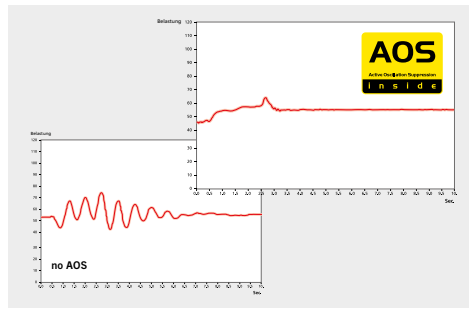
RADIO REMOTE CONTROL
DIALOGUE WITH THE OPERATOR

PALFINGER radio remote controls are equipped with linear lever or cross lever and provide the greatest possible comfort for the operator. All EH models with LED-Display inform the crane operator



HOSE EQUIPMENT FOR ATTACHMENTS
VERSATILE AND USER-FRIENDLY

The hose equipment offers an easy means of connecting auxiliary equipment. The hose equipment is guided in hose trays for protection.



AOS
MAXIMUM PRECISION AND SAFETY

The active oscillation suppression system prevents "post-oscillation" in the event of rapid braking or load changes. The stress peaks on the extension boom system are reduced and material fatigue and wear are minimised. This increases the resale value.



LIGHTING PACKAGE*
MORE CRANE SAFETY PARTICULARLY AT DUSK AND DARK

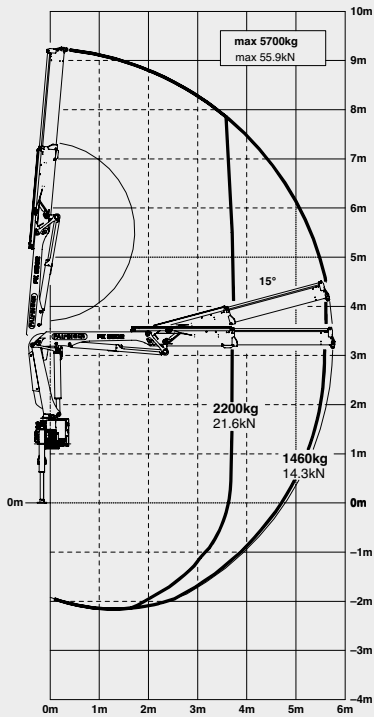
LEDs which backlight the control panel make it easier to read off the crane functions and provide the crane operator with a quick overview of the entire panel during the working process. LED warning lights in the supporting cylinders mean greater safety for crane operator and passers-by.



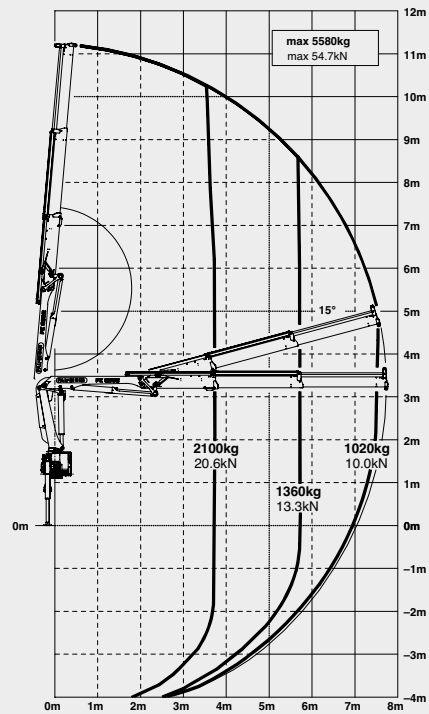
* Optional features / country-specific equipment

PK 8502 HIGH PERFORMANCE

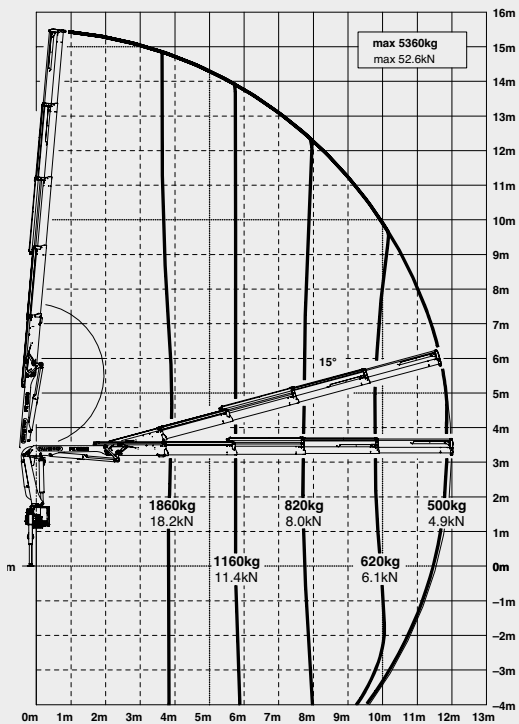
STD



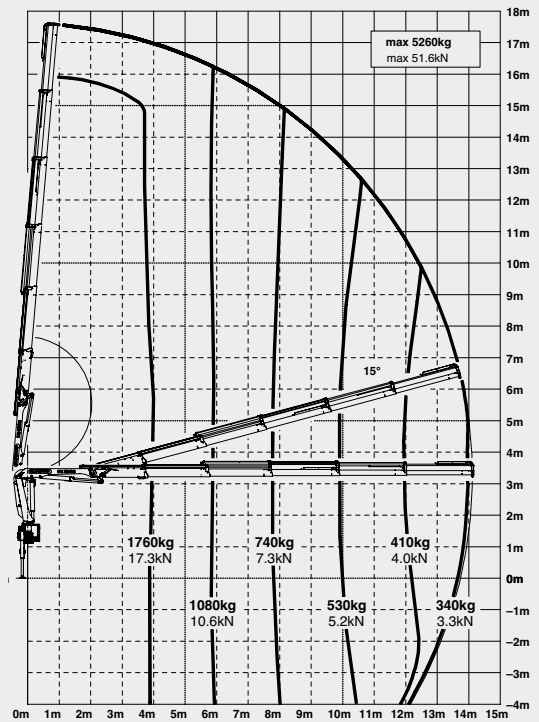
A



C

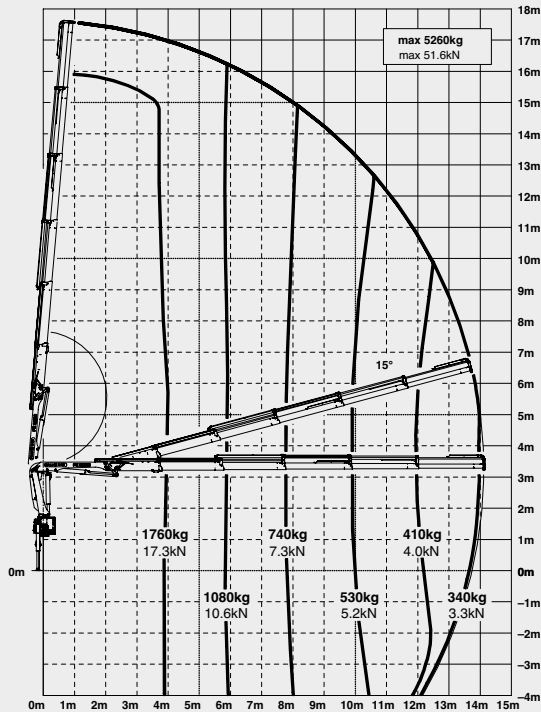


D



UMCOMPROMISING QUALITY

B



LIFTING CAPACITIES

STD	max.	5700 kg /12570 lbs	
	3.7 m	12' 2"	2200 kg /4850 lbs
	5.6 m	18' 4"	1460 kg /3220 lbs

A	max.	5580 kg /12300 lbs	
	3.8 m	12' 6"	2080 kg /4590 lbs
	5.7 m	18' 8"	1360 kg /3000 lbs
	7.6 m	24' 11"	1010 kg /2230 lbs

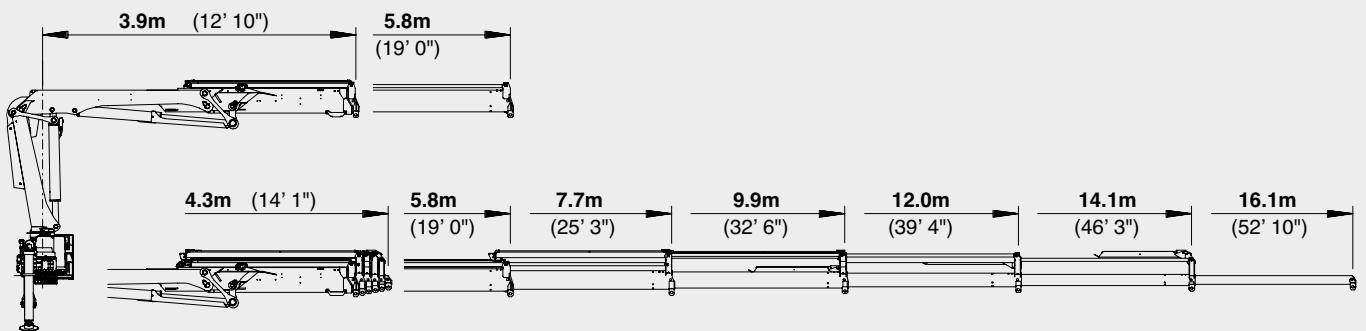
B	max.	5460 kg /12040 lbs	
	3.9 m	12' 10"	1960 kg /4320 lbs
	5.8 m	19' 0"	1260 kg /2780 lbs
	7.7 m	25' 3"	910 kg /2010 lbs
	9.7 m	31' 10"	710 kg /1570 lbs
	11.9 m*	39' 1"	540 kg /1190 lbs
	13.9 m*	45' 7"	430 kg / 950 lbs

C	max.	5360 kg /11820 lbs	
	3.9 m	12' 10"	1860 kg /4100 lbs
	5.8 m	19' 0"	1160 kg /2560 lbs
	7.7 m	25' 3"	820 kg /1810 lbs
	9.8 m	32' 2"	620 kg /1370 lbs
	11.8 m	38' 9"	500 kg /1100 lbs
	13.8 m*	45' 3"	400 kg / 880 lbs
	15.8 m*	51' 10"	320 kg / 710 lbs

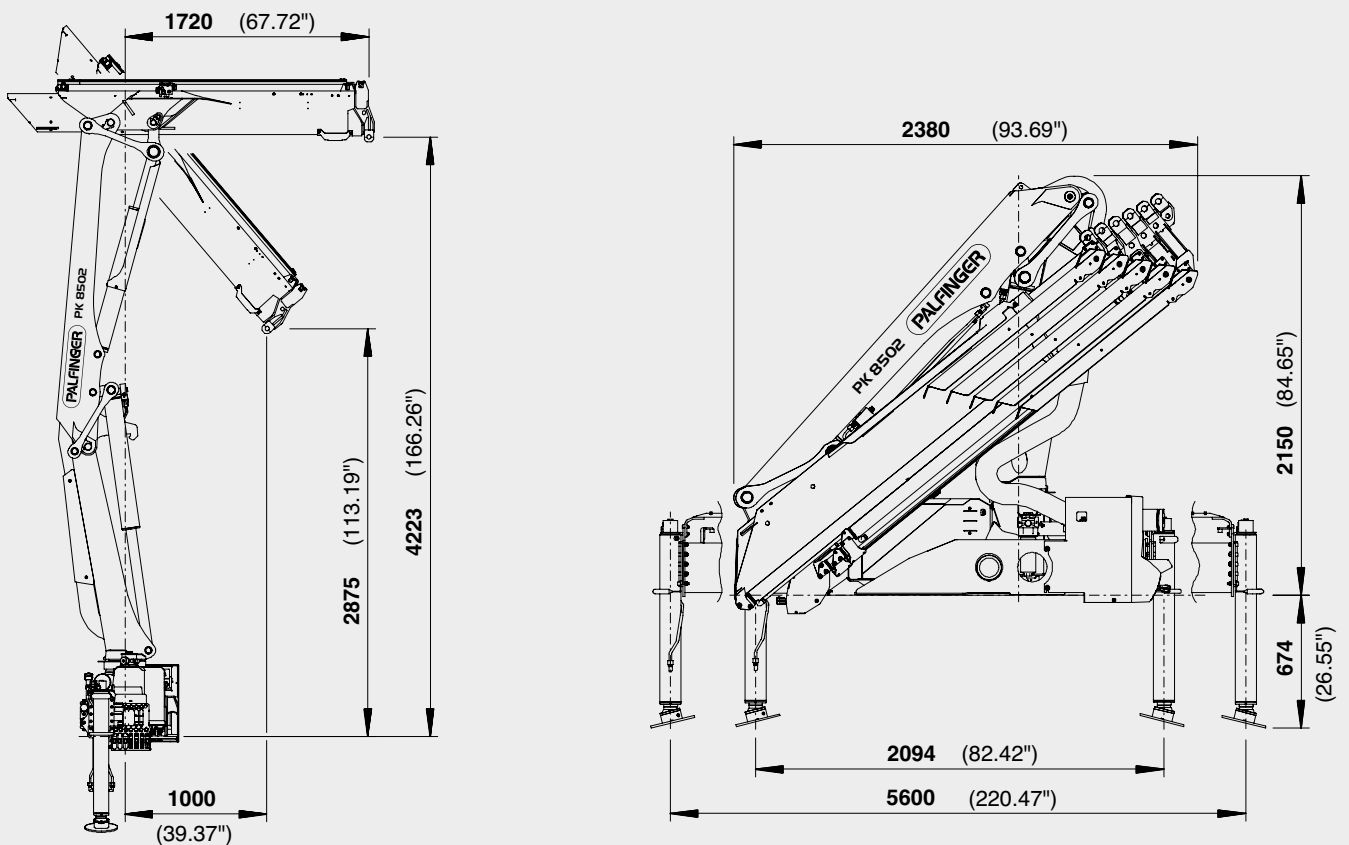
D	max.	5260 kg /11600 lbs	
	4.0 m	13' 1"	1760 kg /3880 lbs
	5.9 m	19' 4"	1080 kg /2380 lbs
	7.8 m	25' 7"	740 kg /1630 lbs
	9.9 m	32' 6"	530 kg /1170 lbs
	11.9 m	39' 1"	410 kg / 900 lbs
	13.9 m	45' 7"	340 kg / 750 lbs
	16.0 m*	52' 6"	270 kg / 600 lbs

PERFECT DIMENSIONS

EXTENSION BOOM VARIATIONS



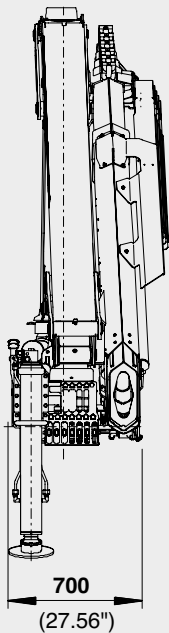
DIMENSIONS



PK 8502

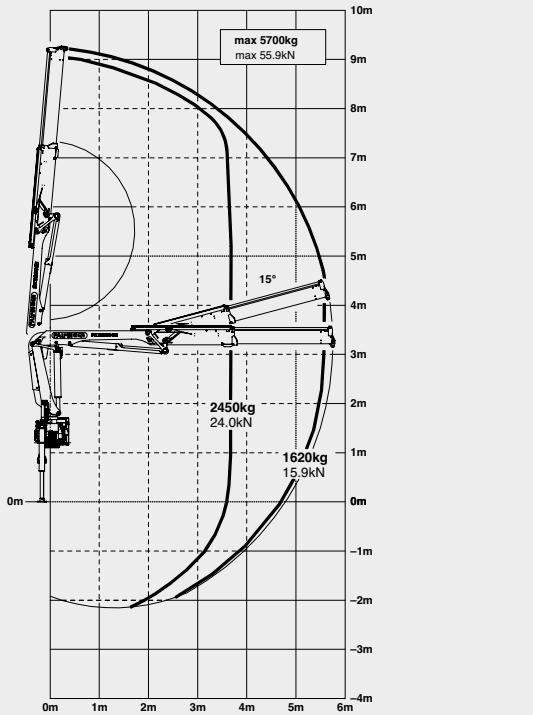
TECHNICAL SPECIFICATIONS (EN 12999 HC1 HD4/B3)

max. lifting moment	8.2 mt/80.4 kNm	59330 ft.lbs
max. lifting capacity	5700 kg/55.9 kN	12570 lbs
max. hydraulic outreach	14.1 m	46' 3"
max. manual outreach	16.1 m	52' 10"
Slewing angle	400°	
Slewing torque	1.0 mt/9.8 kNm	7240 ft.lbs
Stabilizer spread	std. 3.2 m/10' 6"	max. 5.6 m/18' 4"
Fitting space required (std.)	0.70 m	2' 4"
Width folded	2.33 m	7' 8"
max. operating pressure	320 bar	4640 psi
Recommended pump capacity	from 25 l/min to 35 l/min	6.6 US gal./min 9.2 US gal./min
Dead weight (std.)	1044 kg	2300 lbs

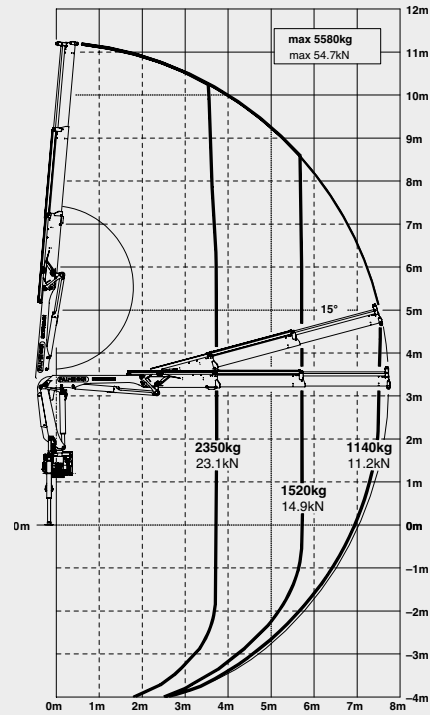


PK 9002 EH HIGH PERFORMANCE

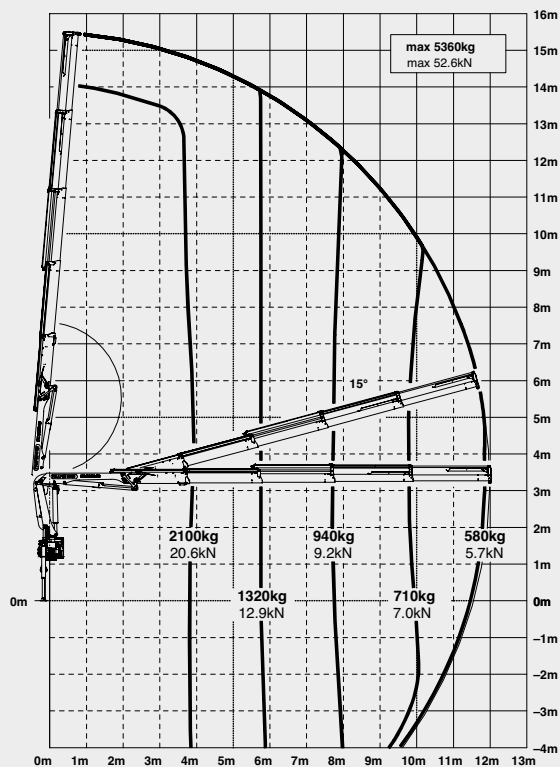
STD



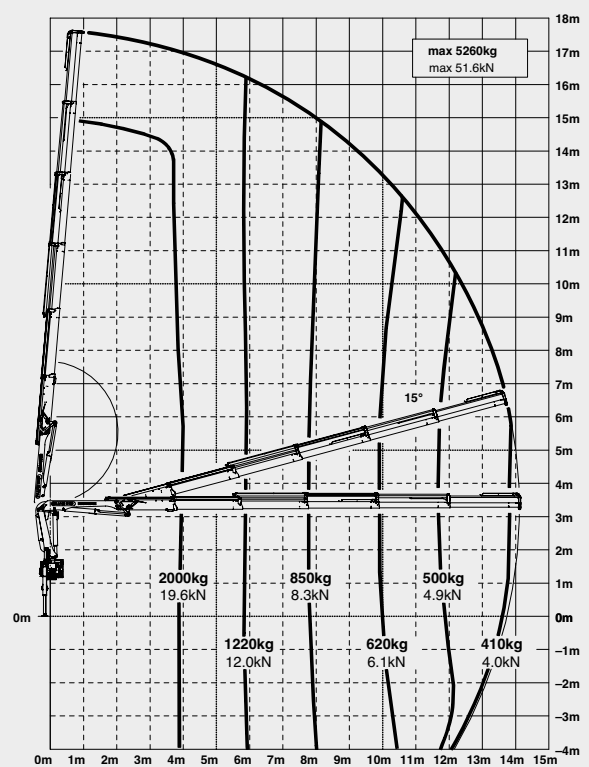
A



C

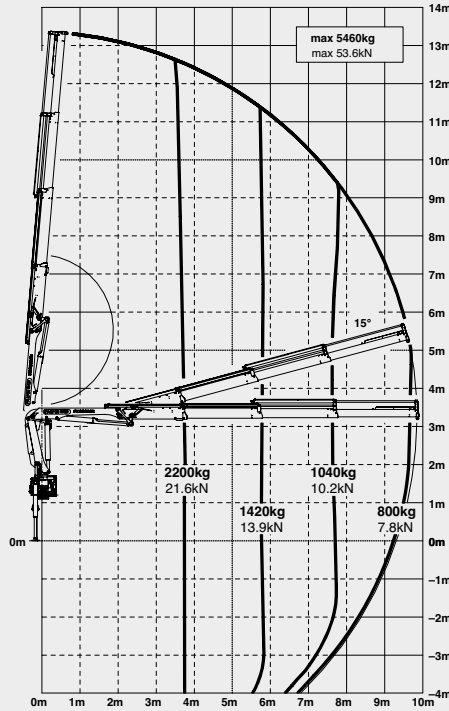


D



POWERFUL AND VERSATILE

B



LIFTING CAPACITIES

STD	max.		5700 kg /12570 lbs
		3.7 m	12' 2"
		5.6 m	18' 4"
			2450 kg /5400 lbs
			1620 kg /3570 lbs

A	max.		5580 kg /12300 lbs
		3.8 m	12' 6"
		5.7 m	18' 8"
		7.6 m	24' 11"
			2350 kg /5180 lbs
			1520 kg /3350 lbs
			1140 kg /2510 lbs

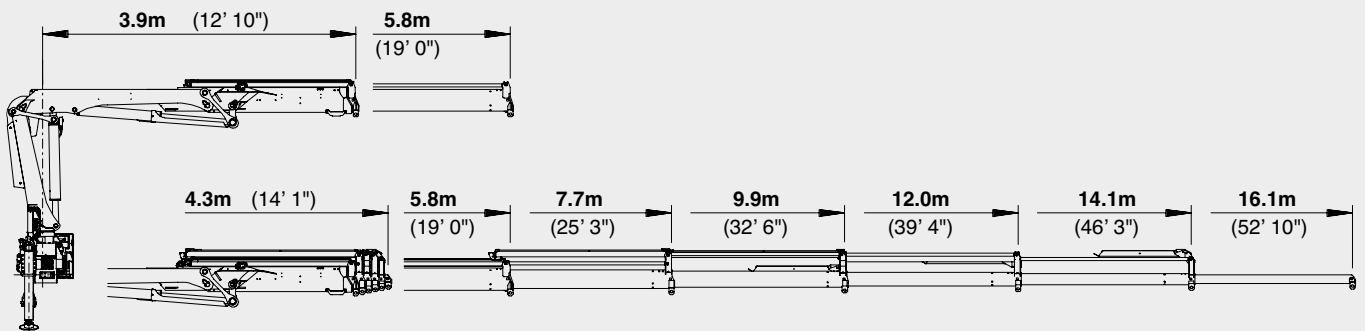
B	max.		5460 kg /12040 lbs
		3.9 m	12' 10"
		5.8 m	19' 0"
		7.7 m	25' 3"
		9.7 m	31' 10"
		11.9 m*	39' 1"
		13.9 m*	45' 7"
			2200 kg /4850 lbs
			1420 kg /3130 lbs
			1040 kg /2290 lbs
			800 kg /1760 lbs
			620 kg /1370 lbs
			500 kg /1100 lbs

C	max.		5360 kg /11820 lbs
		3.9 m	12' 10"
		5.8 m	19' 0"
		7.7 m	25' 3"
		9.8 m	32' 2"
		11.8 m	38' 9"
		13.8 m*	45' 3"
		15.8 m*	51' 10"
			2100 kg /4630 lbs
			1320 kg /2910 lbs
			940 kg /2070 lbs
			710 kg /1570 lbs
			580 kg /1270 lbs
			460 kg /1010 lbs
			380 kg / 840 lbs

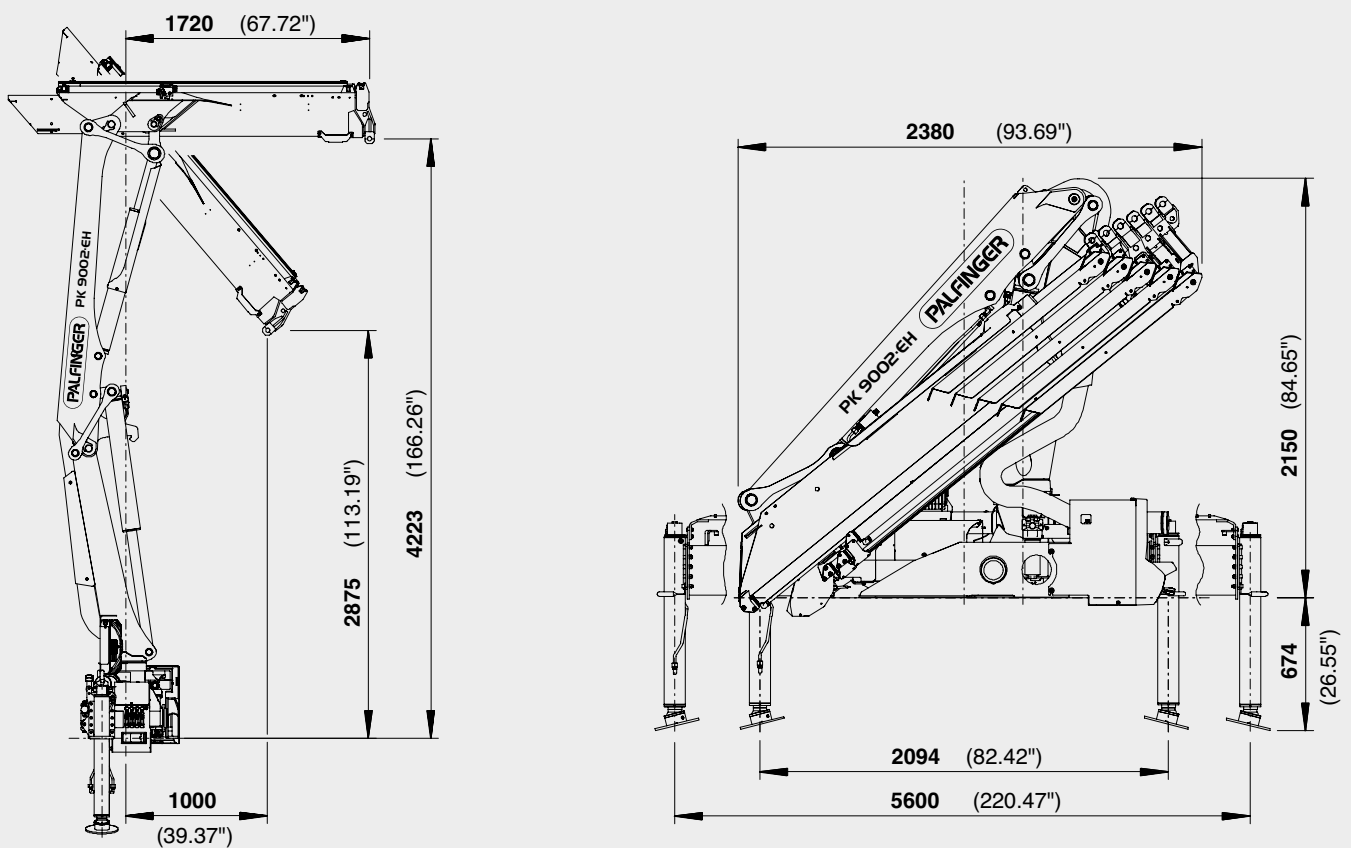
D	max.		5260 kg /11600 lbs
		4.0 m	13' 1"
		5.9 m	19' 4"
		7.8 m	25' 7"
		9.9 m	32' 6"
		11.9 m	39' 1"
		13.9 m	45' 7"
		16.0 m*	52' 6"
			2000 kg /4410 lbs
			1220 kg /2690 lbs
			850 kg /1870 lbs
			620 kg /1370 lbs
			500 kg /1100 lbs
			410 kg / 900 lbs
			330 kg / 730 lbs

PERFECT DIMENSIONS

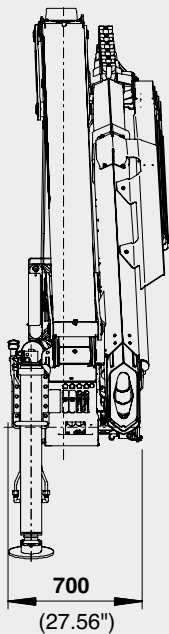
EXTENSION BOOM VARIATIONS



DIMENSIONS



PK 9002



TECHNICAL SPECIFICATIONS (EN 12999 HC1 HD4/B3)

max. lifting moment	9.1 mt/89.3 kNm	65840 ft.lbs
max. lifting capacity	5700 kg/55.9 kN	12570 lbs
max. hydraulic outreach	14.1 m	46' 3"
max. manual outreach	16.1 m	52' 10"
Slewing angle	400°	
Slewing torque	1.0 mt/9.8 kNm	7240 ft.lbs
Stabilizer spread	std. 3.2 m/10' 6"	max. 5.6 m/18' 4"
Fitting space required (std.)	0.70 m	2' 4"
Width folded	2.33 m	7' 8"
max. operating pressure	350 bar	5075 psi
Recommended pump capacity	from 40 l/min to 50 l/min	10.6 US gal./min 13.2 US gal./min
Dead weight (std.)	1069 kg	2360 lbs

PACKAGE MODEL

- E-HPLS
- Paltronic 50
- Radio remote control with LED display
- Danfoss control valve or PVG2000
- 8.5 kW oil cooler
- 100 l oil tank

