

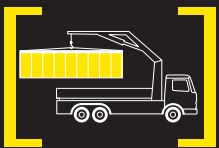
PK 60002

Performance

PALFINGER CRANE



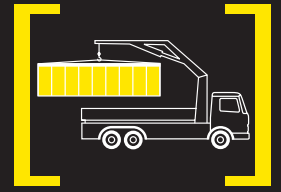
HEAVY DUTY CRANE FOR TOUGH DEMANDS



ENORMOUS LIFTING CAPACITY

The PK 60002 *Performance* opens up a broad spectrum of opportunities for its crane operators: 20.4 m hydraulic outreach and a lifting moment of 58.3 mt see to that! By the use of high-strength, fine-grained steel the ideal ratio between deadweight and performance can be achieved.

In addition, technical highlights such as AOS, Power Link Plus, HPLS (High Power Lifting System), and the optional integrated stability control (ISC) guarantee top performance of this heavy-duty crane.



ANOTHER DIMENSION OF HIGH-TECH



Advanced Package

- HPLS
- Oil cooler installed
- Radio remote control
- Capacity display on control console
- PALTRONIC 50



Load holding valves

They prevent the crane booms from dropping and are fitted as standard on the slewing system and on the main boom cylinder, the extension boom cylinders, and the swivel cylinder. The valves are positioned in such a way that they are protected from being damaged.



Control valve

In combination with the radio remote control system the load sensing proportional valve enables the crane to be adjusted very slightly.

Additional fly jibs

To extend the range of applications of the PK 60002 *Performance*, additional fly jibs are available in several designs and for various boom versions.



AOS

The Active Oscillation Suppression system, which is available exclusively from PALFINGER, compensates for jolts and sharp stress cycles caused by crane operation. As oscillations are eradicated, the crane can work with pin-point accuracy, much more quickly and therefore more cost-efficiently.

Endless slewing mechanism

The endless slewing mechanism fitted as standard together with the slewing ring permits an unrestricted radius of action. As a result the crane works much more quickly and cost-efficiently.



Integration of the base frame (optional)

The direct integration of the base frame into the supporting frame gives the crane a low overall height.



CONVINCING CLAIMS



Hose equipment for accessories

This option provides the oil supply for accessories. The hoses are routed in compact troughs and plastic link chains. Optimal protection is achieved.



Functional Design

- Cover for the control valve area
- Covering for the hoses behind the crane column
- Outrigger system with internally routed hydraulic hoses

POWER LINK PLUS

This knuckle boom specially developed by PALFINGER which can be angled upwards stands out by virtue of excellent movement geometry. Even in the tightest spaces difficult crane jobs can be carried out without any problems.

Return oil utilisation

The high speed of the extension system is impressive. It results from the return oil utilisation, which is installed as standard, along with generously dimensioned hydraulic lines. This makes for increased efficiency in any type of application!



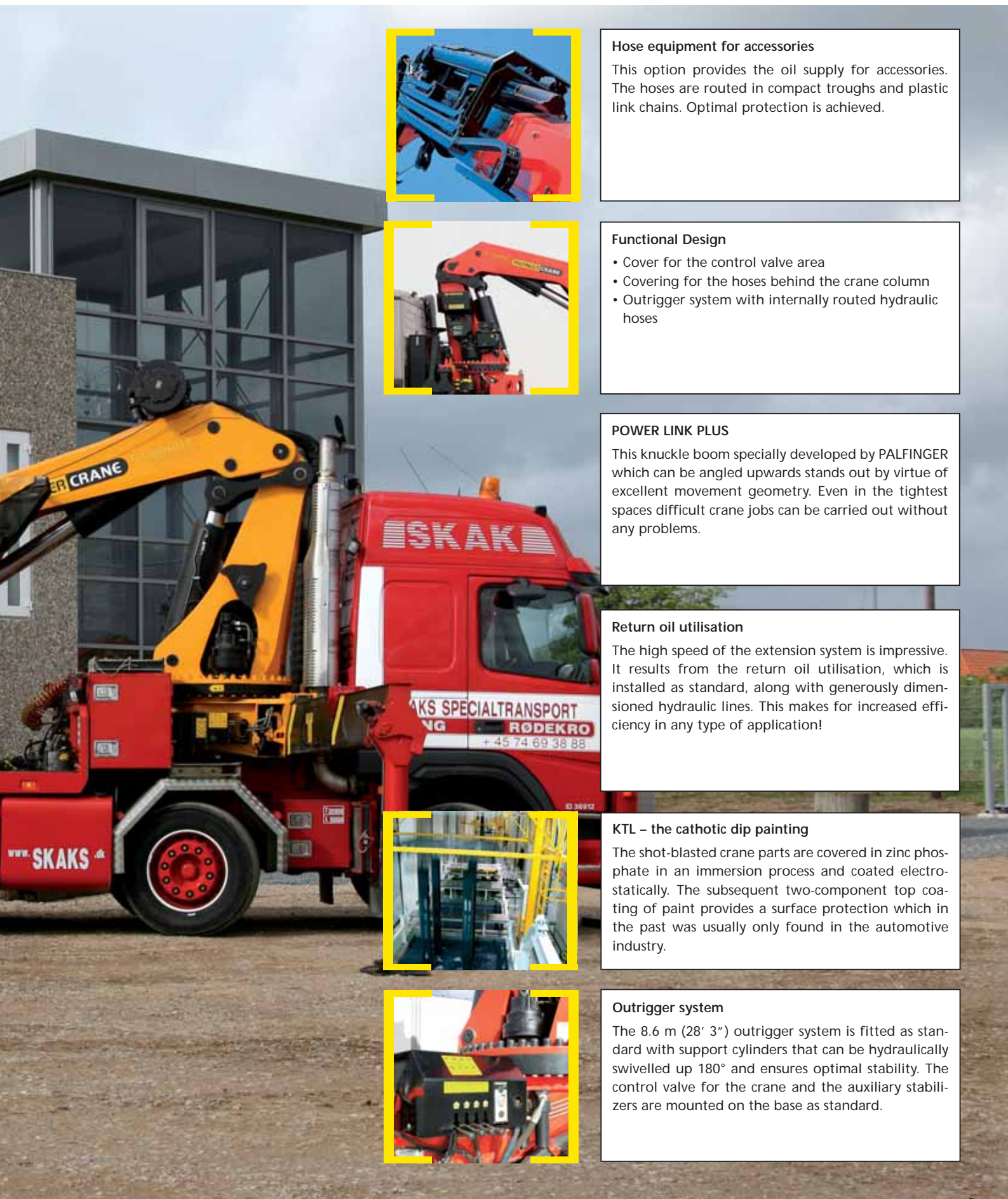
KTL – the cathodic dip painting

The shot-blasted crane parts are covered in zinc phosphate in an immersion process and coated electrostatically. The subsequent two-component top coating of paint provides a surface protection which in the past was usually only found in the automotive industry.

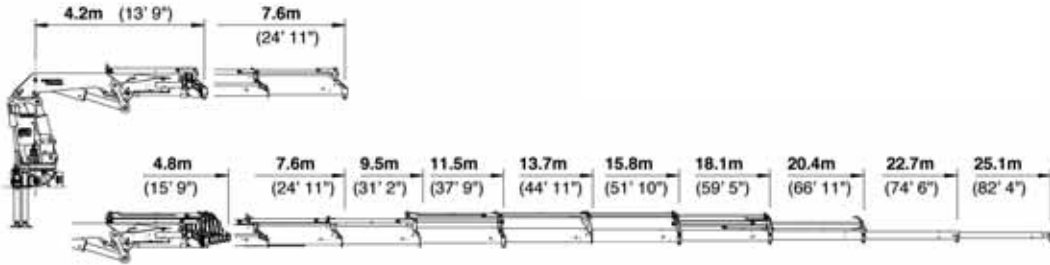


Outrigger system

The 8.6 m (28' 3") outrigger system is fitted as standard with support cylinders that can be hydraulically swivelled up 180° and ensures optimal stability. The control valve for the crane and the auxiliary stabilizers are mounted on the base as standard.



MINIMUM DEADWEIGHT



PK 60002 D PJ170E JV1



PK 60002 E PJ125E JV1

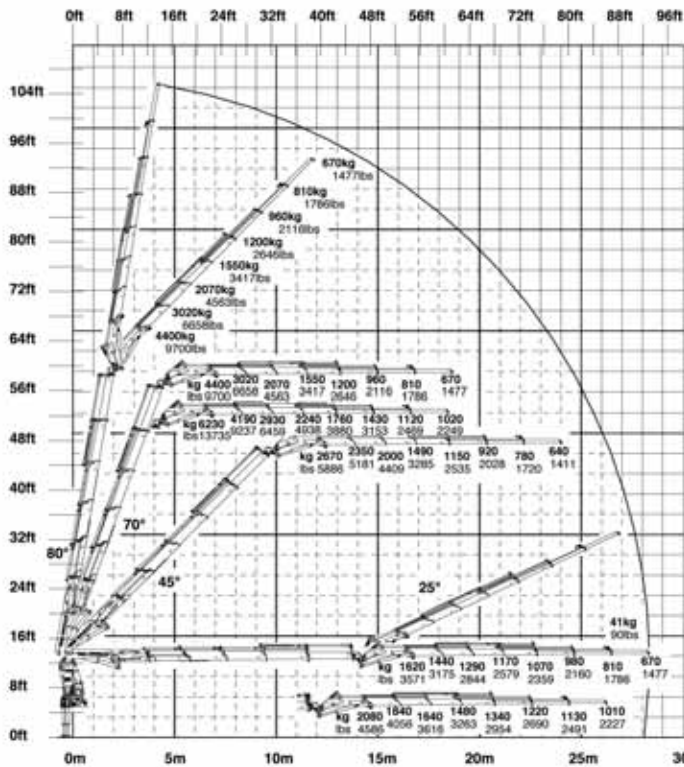


PK 60002 F PJ125E JV1

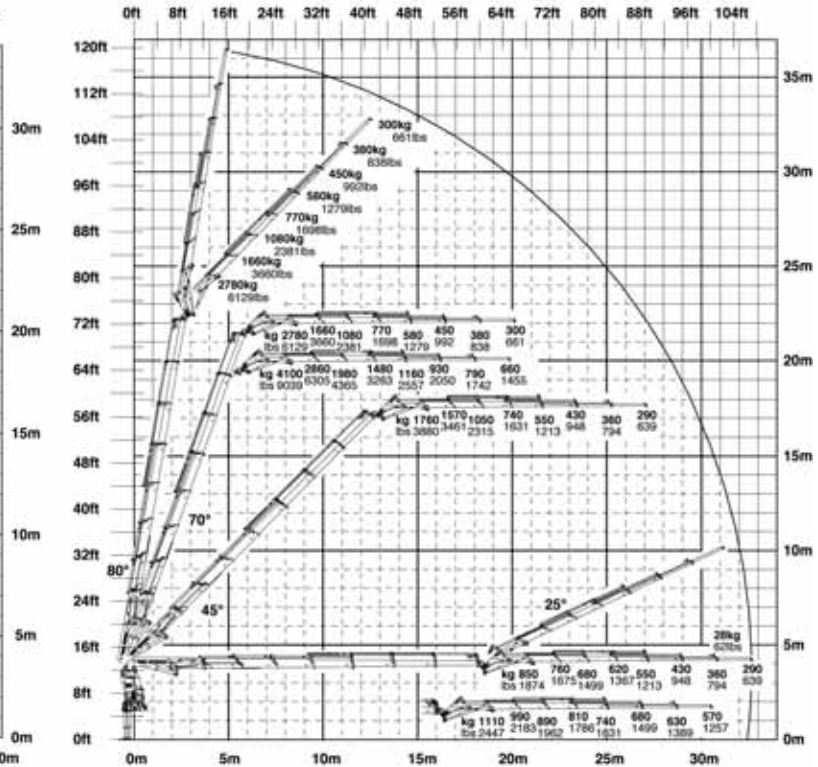


PK 60002 Performance

D PJ170E JV1 DPS

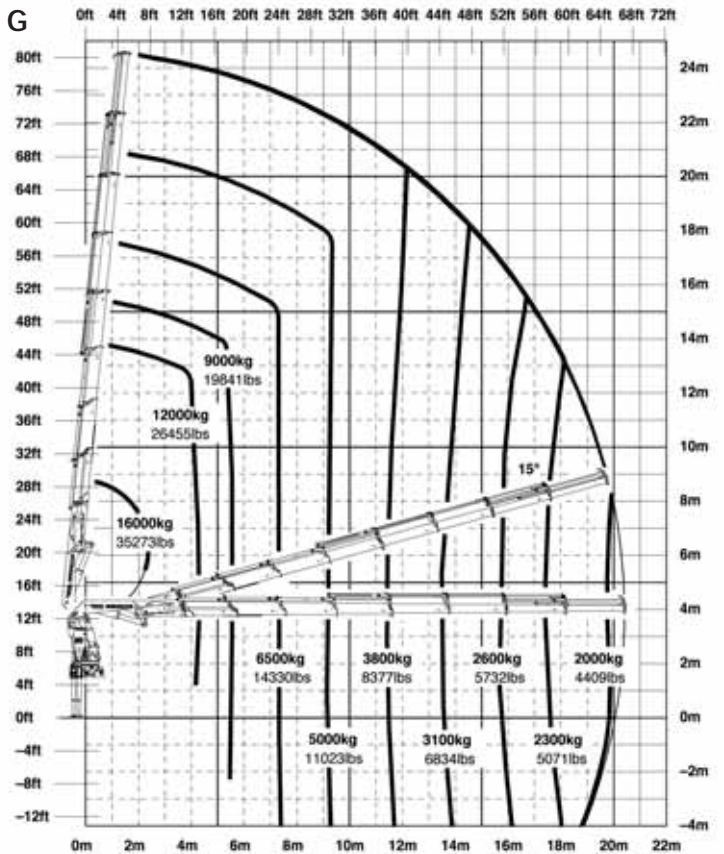
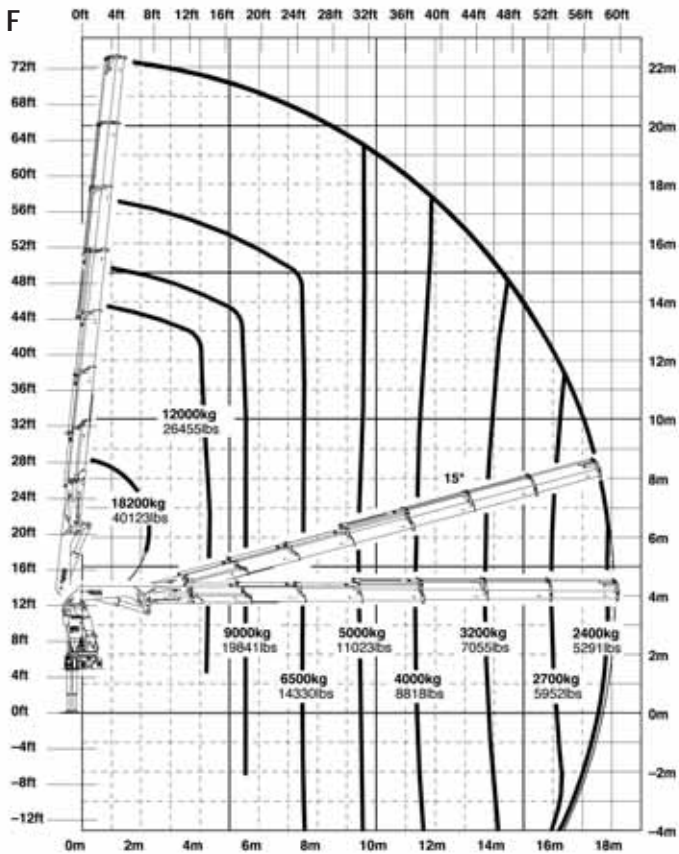
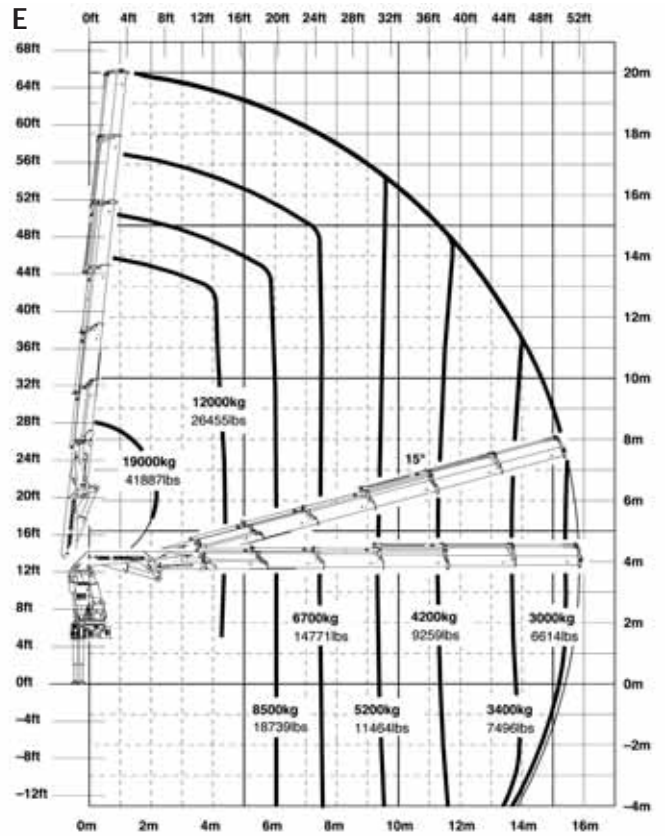
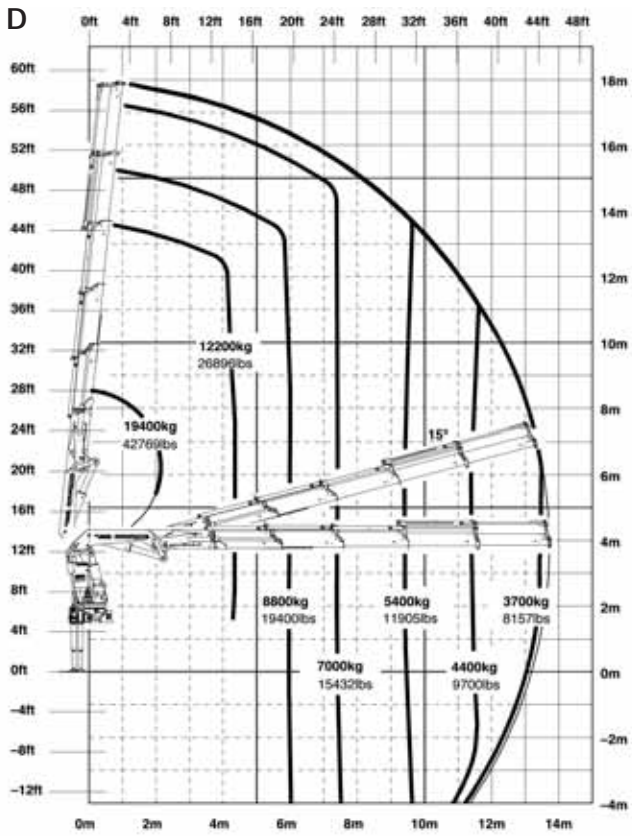


F PJ125E JV1 DPS



GREAT OUTREACH

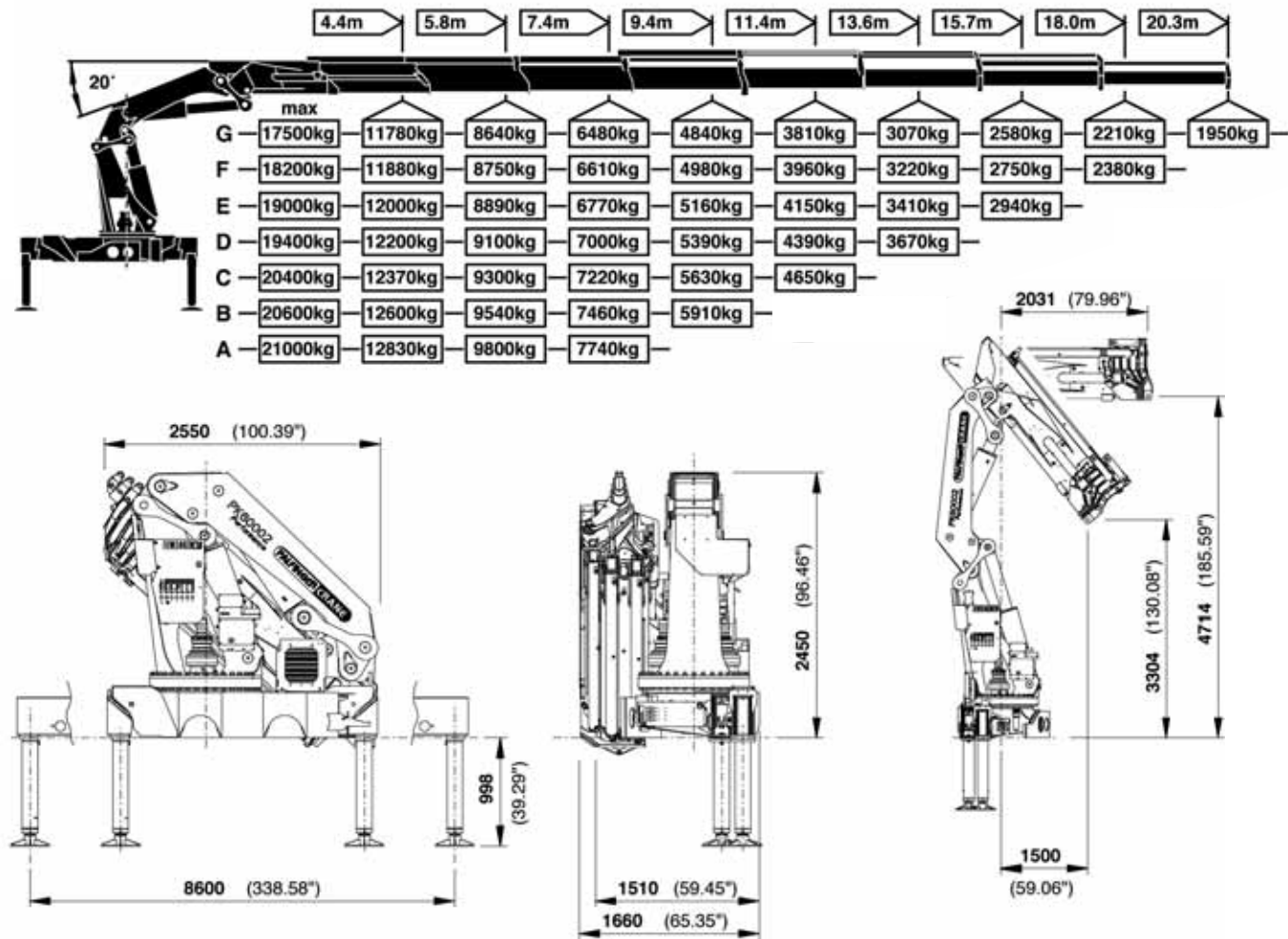
PK 60002 Performance



The outreaches stated are with a boom angle of 20° and are therefore not the maximum.

PK 60002 PERFORMANCE: IDEAL FOR MANY DIFFERENT APPLICATIONS

Max. lifting moment



| PK 60002 Performance | | |
|---|-------------------|----------------|
| Technical Specifications (EN 12999 H1-B3) | | |
| Max. lifting moment | 58.3mt/572.0 kNm | 421890 ft. lbs |
| Max. lifting capacity | 21000 kg/206.0 kN | 46300 lbs |
| Max. hydraulic outreach | 20.4 m | 66' 11" |
| Max. outreach | 25.1 m | 82' 4" |
| Max. outreach (with fly-jib) | 32.6 m | 106' 11" |
| Slewing angle | endless | |
| Slewing torque | | |
| with 1 gear | 4.5mt/44.1 KNm | 32530 ft. lbs |
| with 2 gears | 7.0mt/68.7 KNm | 50670 ft. lbs |

| PK 60002 A Performance | | |
|----------------------------|---|-------------------|
| Standard crane | | |
| Outreach | 7.7 m | 25' 3" |
| Stabilizer spread standard | 8.6 m | 28' 3" |
| Fitting space required | min. 1.51 m/4' 11" | max. 1.66 m/5' 5" |
| Width folded | 2.55 m | 8' 4" |
| Max. operating pressure | 350 bar | 5075 psi |
| Recommended pump capacity | from 80 l/min 17.6 imp.gal/min 21.1 US gal./min | |
| RC and LC-system | to 100 l/min 22.0 imp.gal/min 26.4 US gal./min | |
| Dead weight standard crane | 4956 kg | 10930 lbs |

Applications shown in the leaflet do not always correspond to the standard specifications. Design and specification are subject to change without prior notice.



Design and specification are subject to change without prior notice.

www.palfinger.com

KP-PK60002M1+E, 05/07