

PW 35001 SH High Performance - Available Now



PALFINGER PW 35001 SH

Lifting capacity 2,050 LBS. @ 61'

Four hydraulic extensions

470° rotation

Pal 150 Overload protection system

Low maintenance booms

Hydraulic outriggers 22'3" outreach

Radio Remote Control

Greasing system

2016 Freightliner 114 SD

Detroit DD 13 12.8L 410 HP

Manual transmission

277" wheelbase

Heavy Duty Body

24' 6" Diamond plate steel

Headboard w/ full width mesh window

Strobes and beacons

Fork tie down system

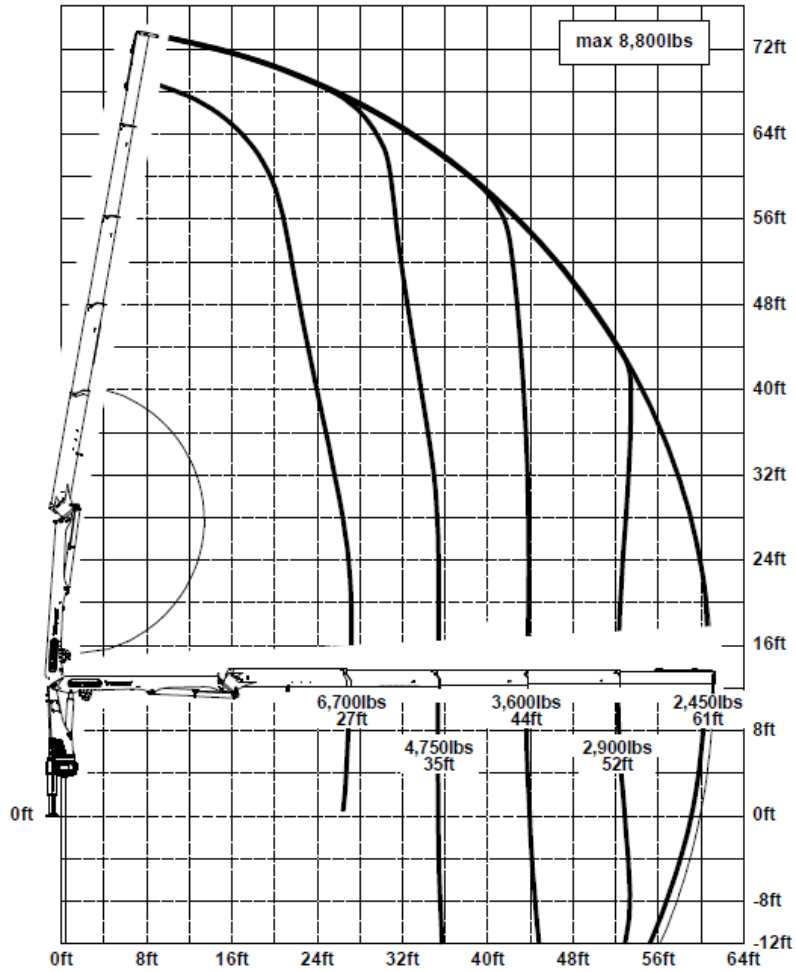
Narrow boom rest

18"x18"x48" aluminum tool box

Contact us today for a quote

4151 W SR 18 Tiffin, OH, 44883

(419) 448-8156 www.tiffinpalfleet.com



FINAL LAYOUT

THIS IS THE STREET-SIDE VIEW OF THE FINISHED UNIT. HEIGHTS AND GROUND CLEARANCES, WHEN SHOWN, ARE BASED ON A SEMI-LADEN FRAME HEIGHT.

